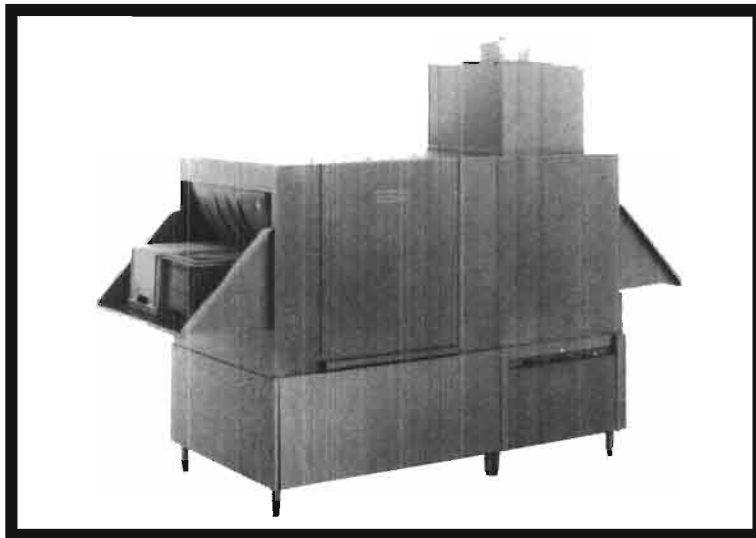
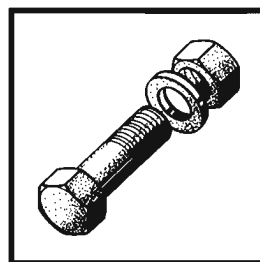


HOBART



Serie UWX

Spare Parts
Pièces Détachées
Ersatzteile
Onderdelen



Contents

Entry section No. 1	5
Entry section No. 2	6
Interspace	7
Conveyor take up unit	8
Wash-modul	9
Tank heating + float switch	10
Tank heating – hot water + steam	11
Pump	12
Pumpe	13
Wash arms	14
Lateral wash arms	15
Drain	16
Rinse zone	17
Dual rinse	18
Rinse pump	19
Booster el. heated	20
Final rinse pipework	21
Booster 0,6 m ² hot water + steam	22
Booster 1,4 m ² hot water + steam	23
Condenser C 7	24
Condensers-panels C-7	25
Exhaust – hood	26
Exhaust extracion – fan	27
Drive unit 1	28
Exit section I	29
Interspace	30
Exit section	31
Drive unit 2	32
Tracks	33, 34
Conveyor + strainer system	35

Inhalt

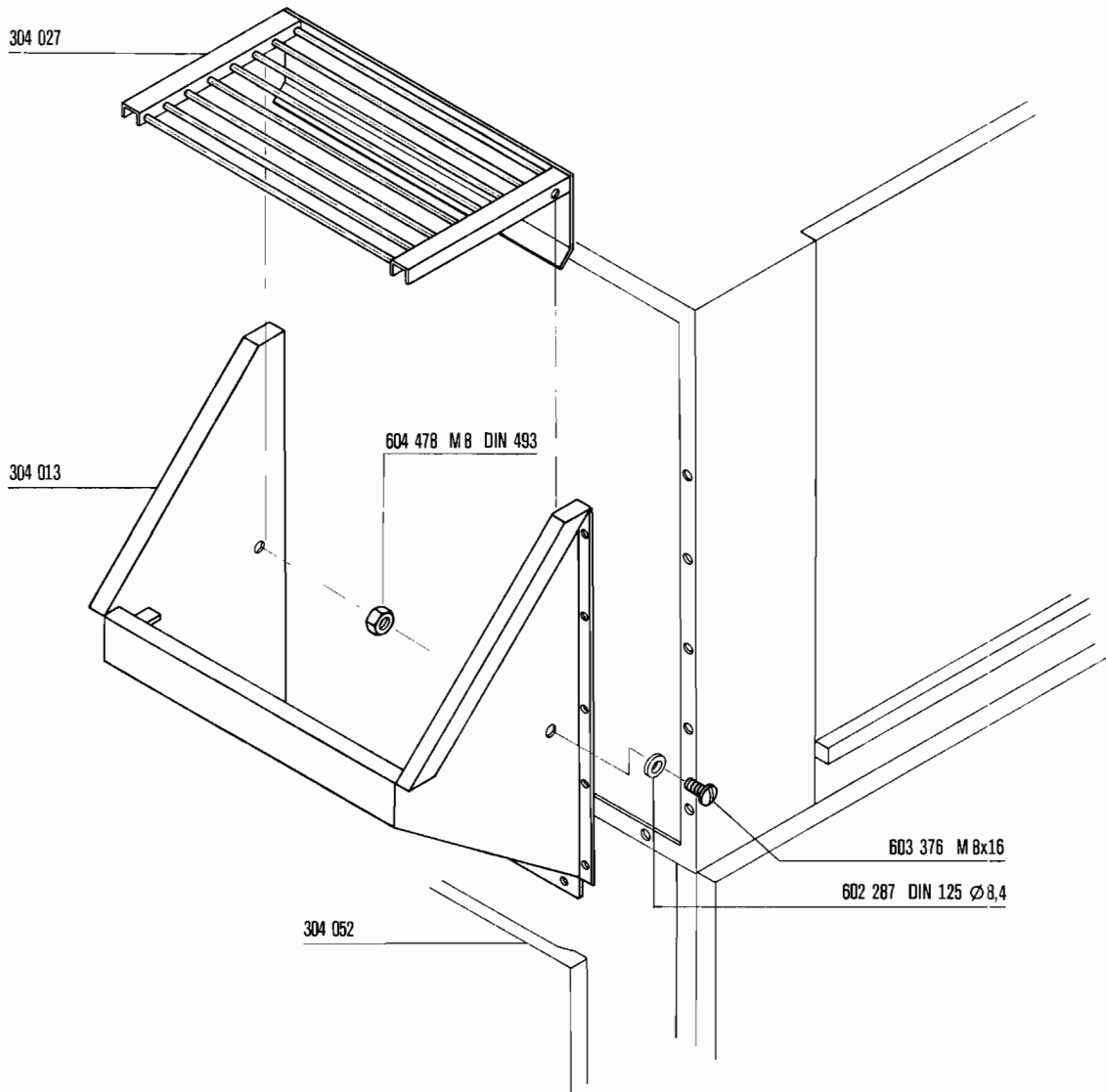
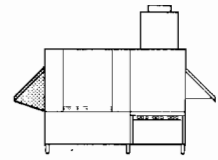
Zulaufstrecke Nr. 1	5
Zulaufstrecke Nr. 2	6
Zwischenstrecke	7
Spannvorrichtung für Transportband	8
Waschmodul	9
Tankheizung + Schwimmer-Schalter	10
Tankheizung – Heißwasser + Dampf	11
Pumpe	12
Pumpe	13
Wascharme	14
Seitliche Wascharme	15
Ablauf	16
Klarspülzone	17
Duo-Nachspülung	18
Klarspülpumpe	19
Durchlauferhitzer elektrisch beheizt	20
Nachspülarmatur	21
Durchlauferhitzer 0,6 m ² HW + Dampf	22
Durchlauferhitzer 1,4 m ² HW + Dampf	23
Kondensator C 7	24
Kondensatoren-Verkleidungen C-7	25
Wrasenabzug – Haube	26
Wrasenabzug – Ventilator	27
Antrieb 1	28
Auslaufzone I	29
Zwischenstrecke	30
Auslaufzone	31
Antrieb 2	32
Laufschiene	33, 34
Band + Siebssystem	35

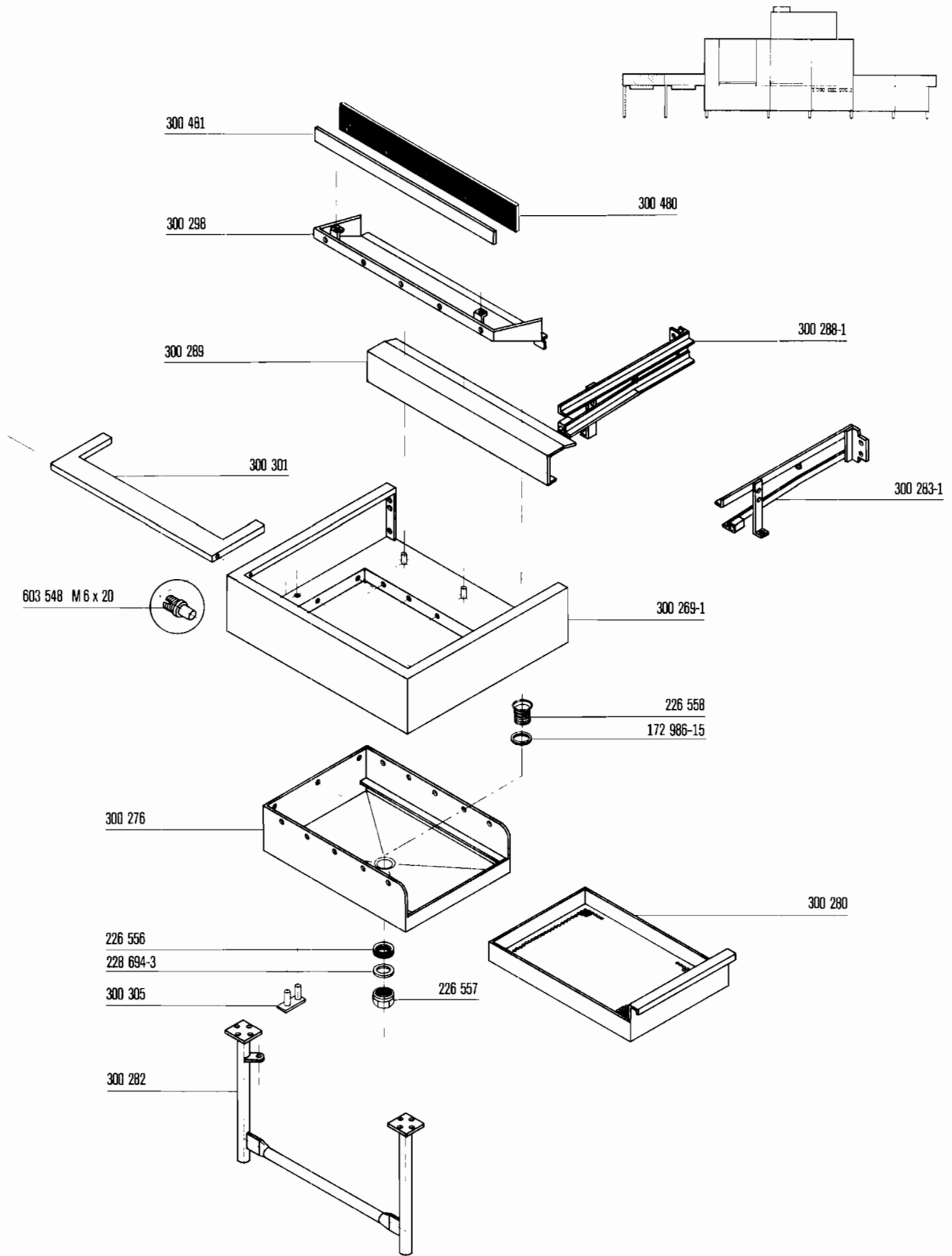
Sommaire

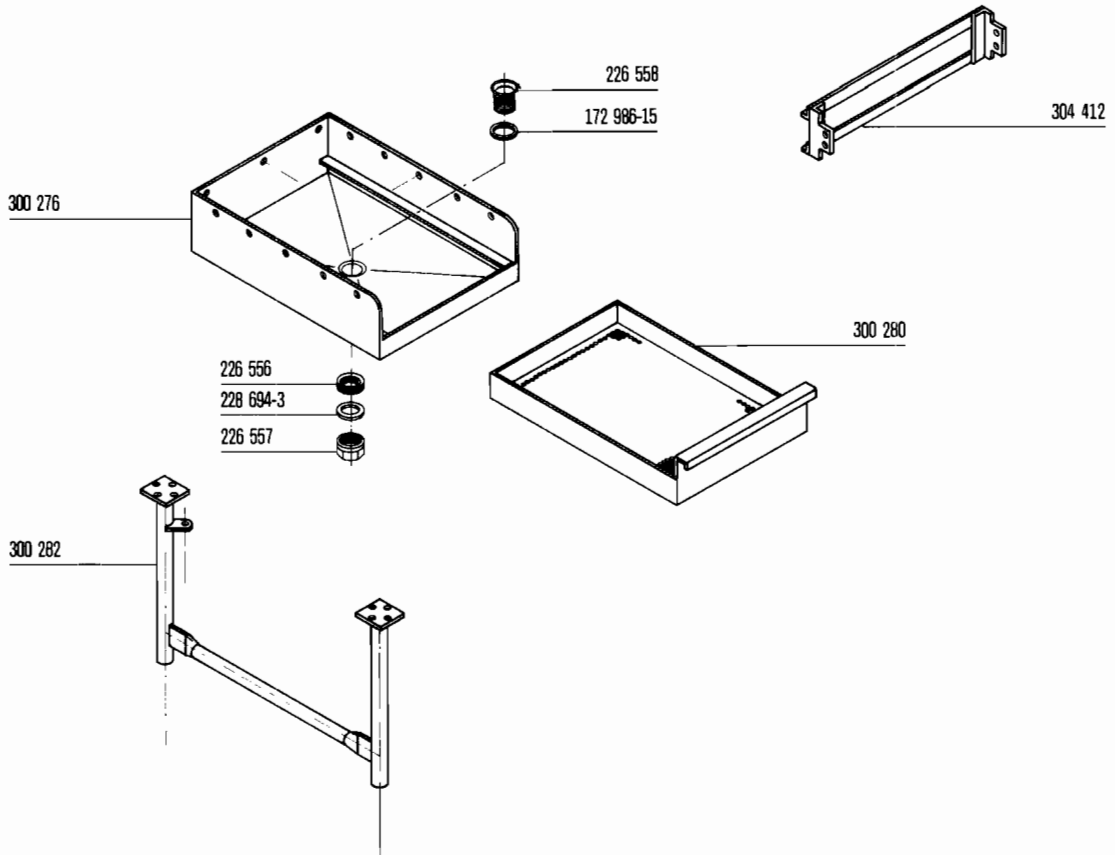
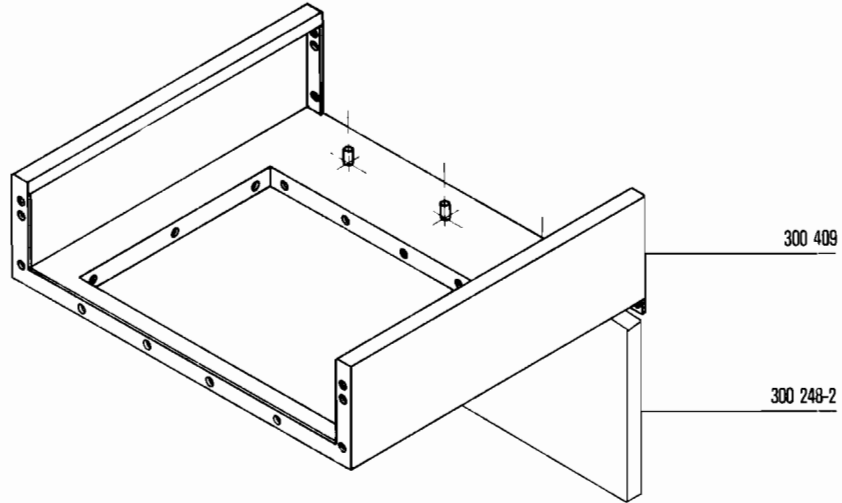
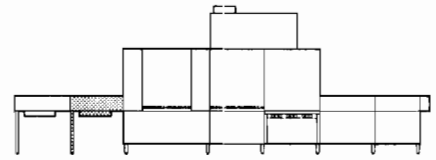
Zone de chargement No. 1	5
Zone de chargement No. 2	6
Section intermediaire	7
Tendeur de convoyeur	8
Module de lavage	9
Chauffage du bac + interrupteur à flotteur	10
Chauffage du bac – eau chaud + vapeur	11
Pompe	12
Pompe	13
Bras de lavage	14
Bras de lavage laterales	15
Vidange	16
Zone de rinçage	17
Double rinçage	18
Pompe de rinçage	19
Chaudière électrique	20
Armature du système de rinçage	21
Chaudière 0,6 m ² eau chaude + vapeur	22
Chaudière 1,4 m ² eau chaude + vapeur	23
Condenseur C 7	24
Condenseurs-habillage C-7	25
Extraction des buées – capot	26
Extraction des buées – ventilateur	27
Entrainement 1	28
Zone de chargement I	29
Section intermediaire	30
Zone de chargement	31
Entrainement 2	32
Rails	33, 34
Convoyeur + système des filtres	35

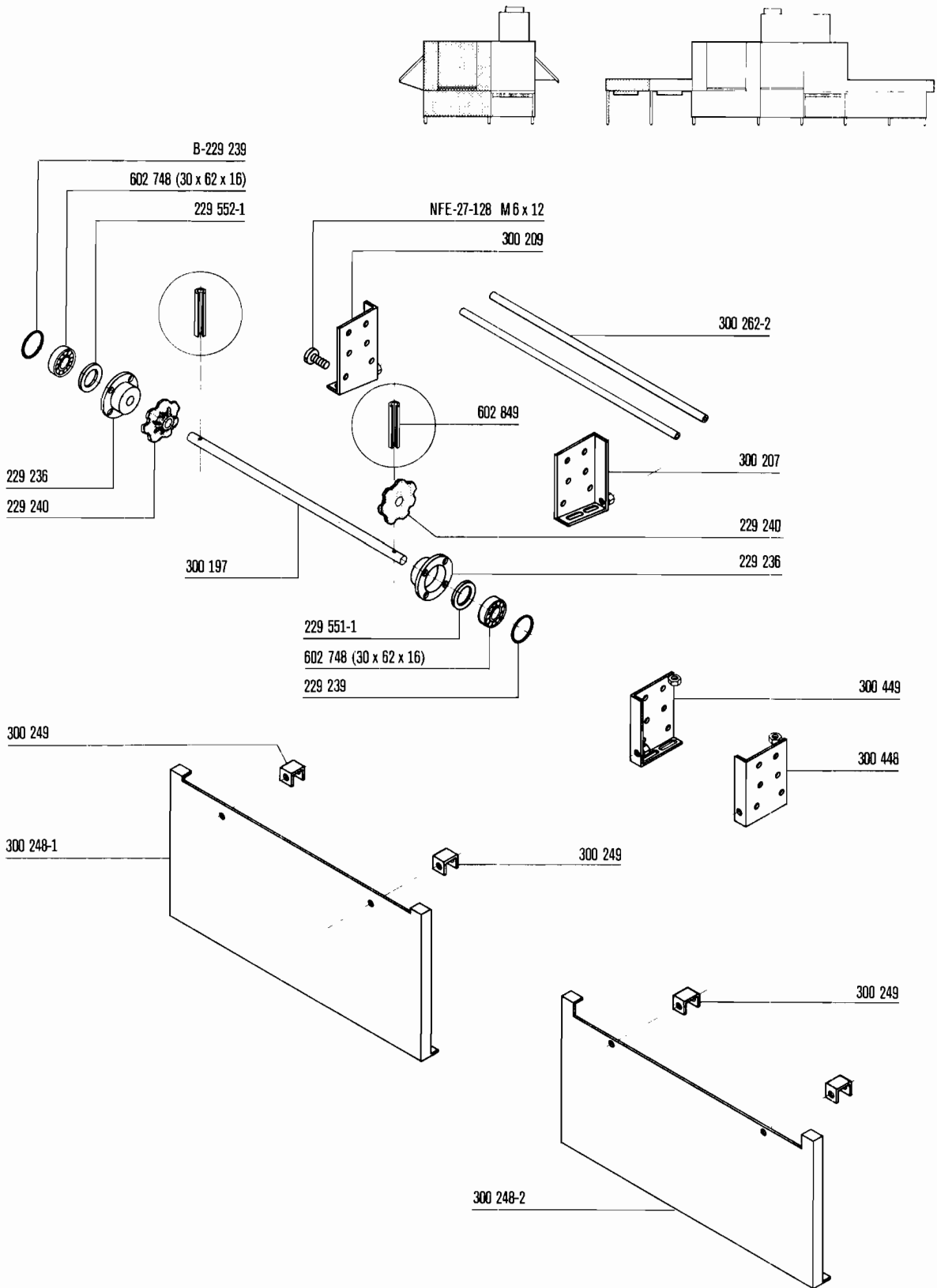
Inhoud

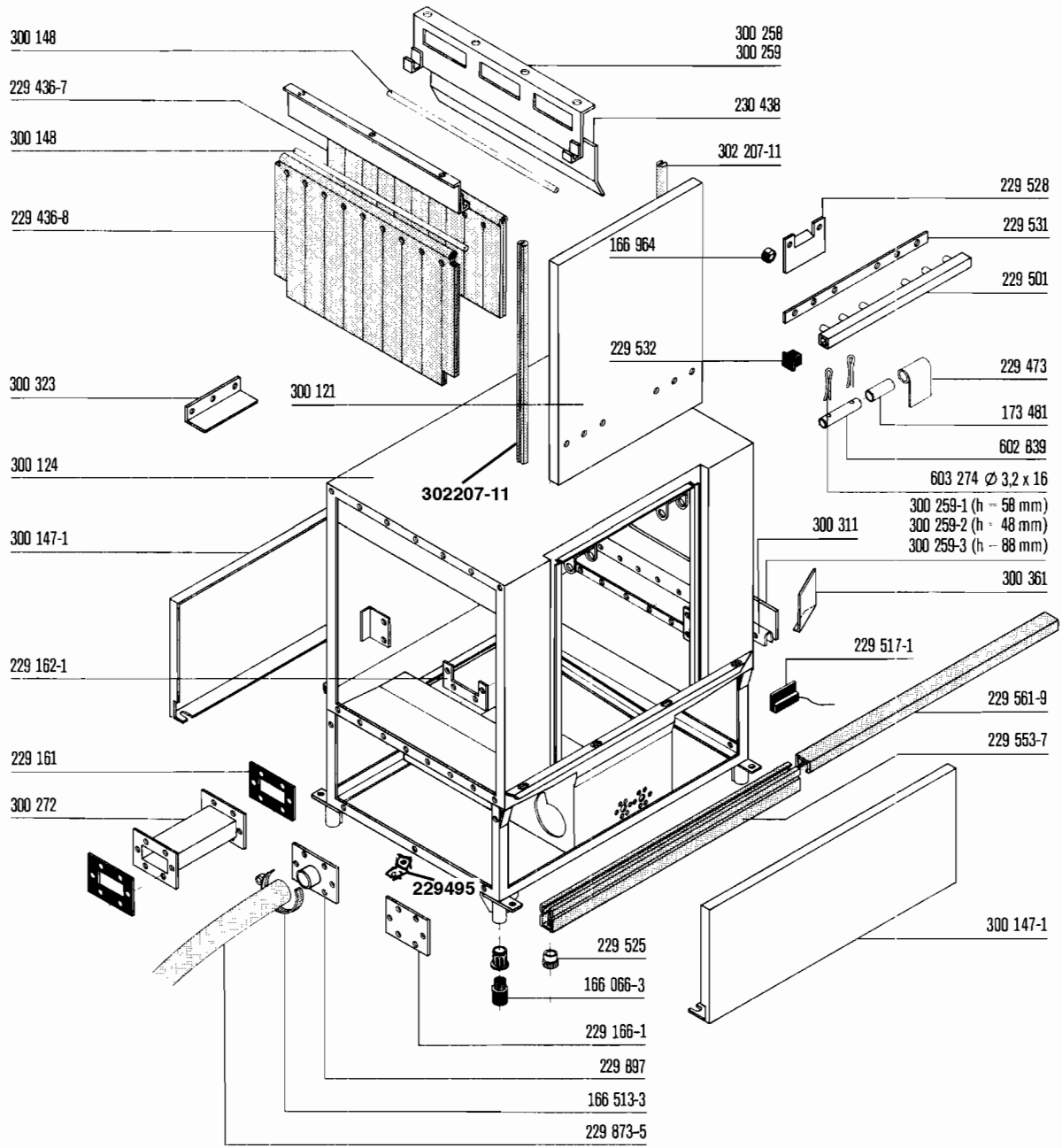
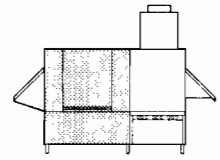
Toevoersectie No. 1	5
Toevoersectie No. 2	6
Tussentraject	7
Spaninrichting voor transportbanden	8
Wasmodul	9
Tankverwarming + zwem-schakelaar	10
Tankverwarming – heet water + stoom	11
Pomp	12
Pomp	13
Wasarmen	14
Zijdelingse wasarmen	15
Afvoer	16
Naspoelzone	17
Duo Naspoeling	18
Naspoelpomp	19
Booster elektrisch	20
Leidingwerk naspoeling	21
Booster 0,6 m ² heet water + stoom verwarming	22
Booster 1,4 m ² heet water + stoom verwarming	23
Kondensator C 7	24
Kondensorbekledingen C-7	25
Wasemafzuiging – behuizing	26
Wasemafzuiging – ventilator	27
Aandrijving 1	28
Afvoersectie I	29
Tussentraject	30
Afvoersectie	31
Aandrijving 2	32
Spoorweg	33, 34
Transportbanden + zeef systeem	35



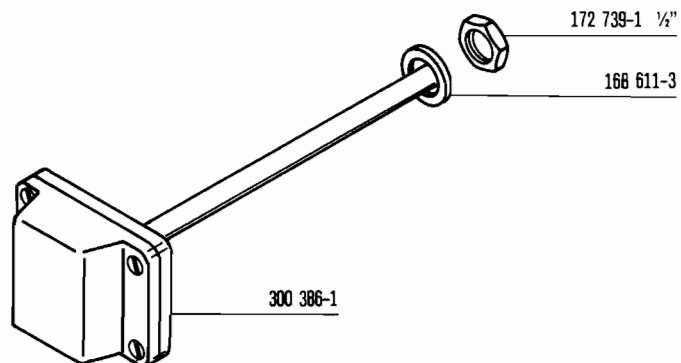
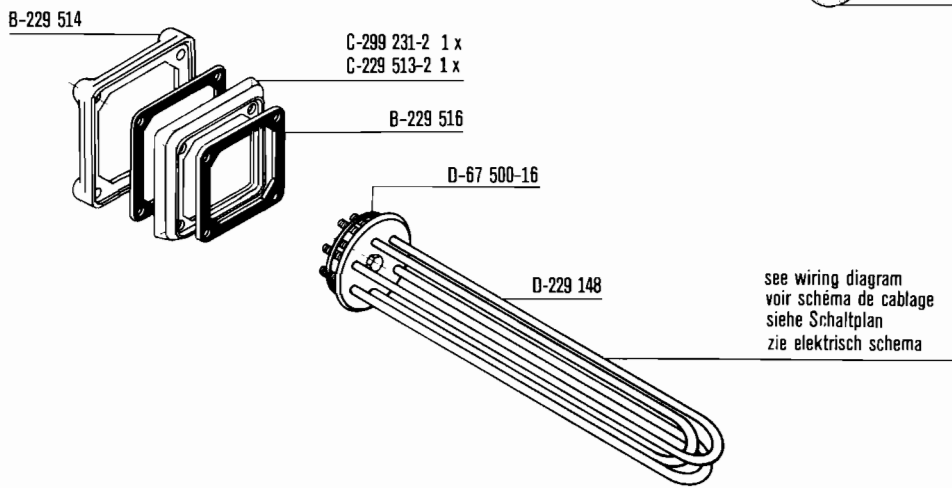
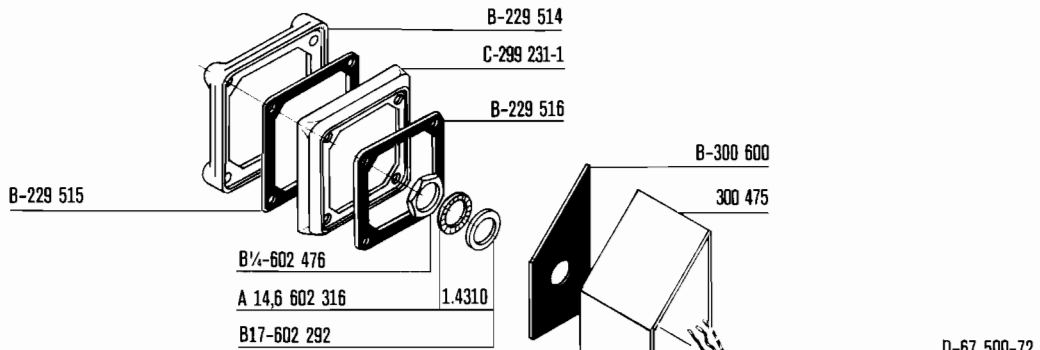
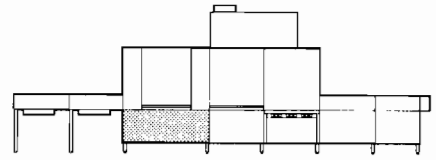


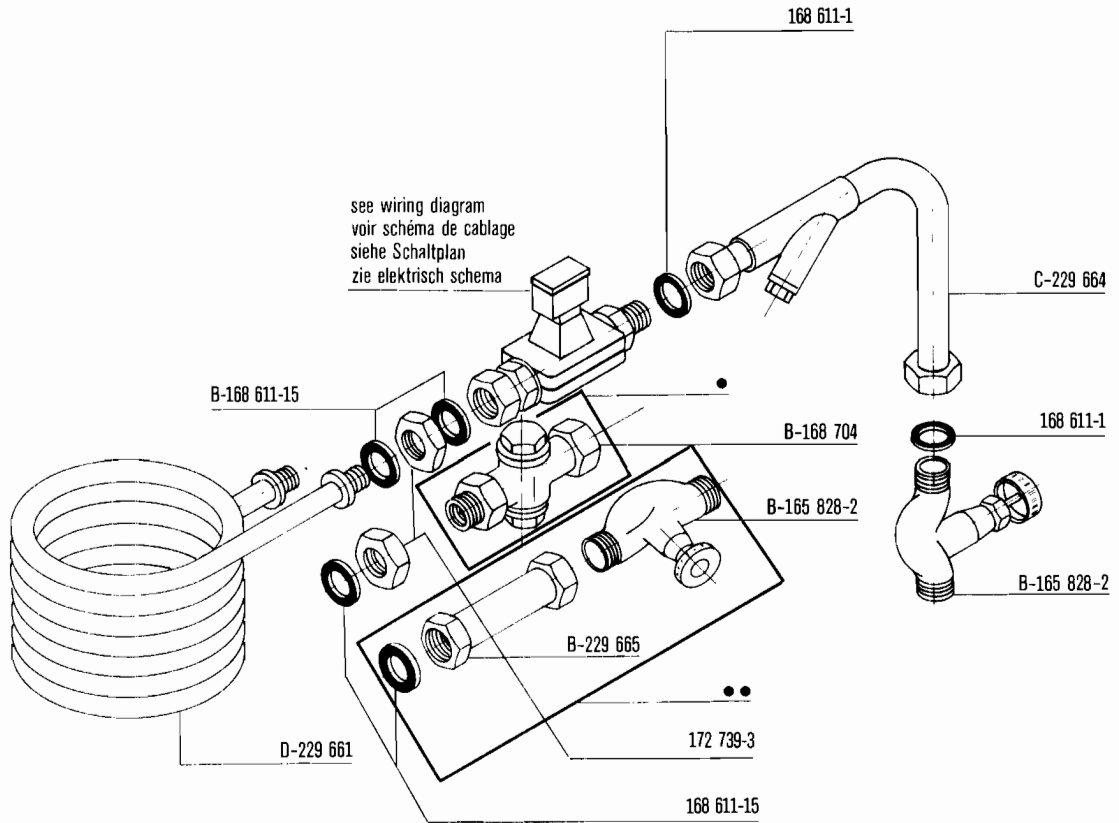
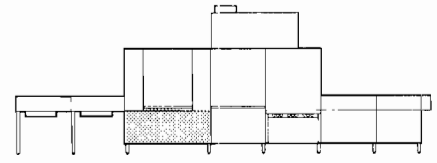




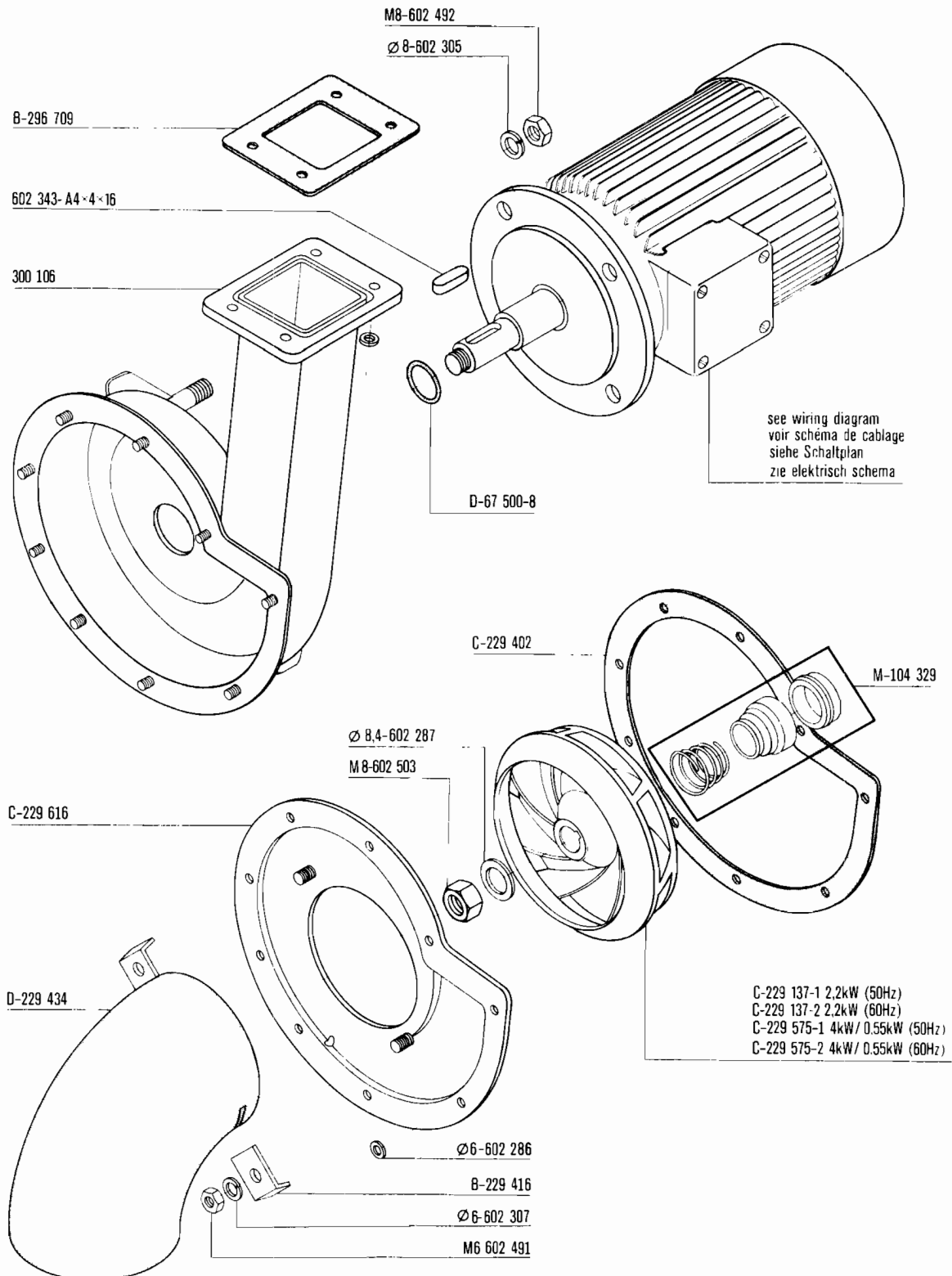
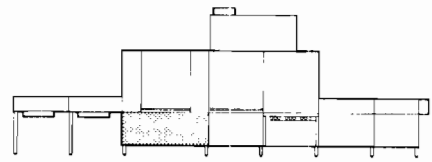


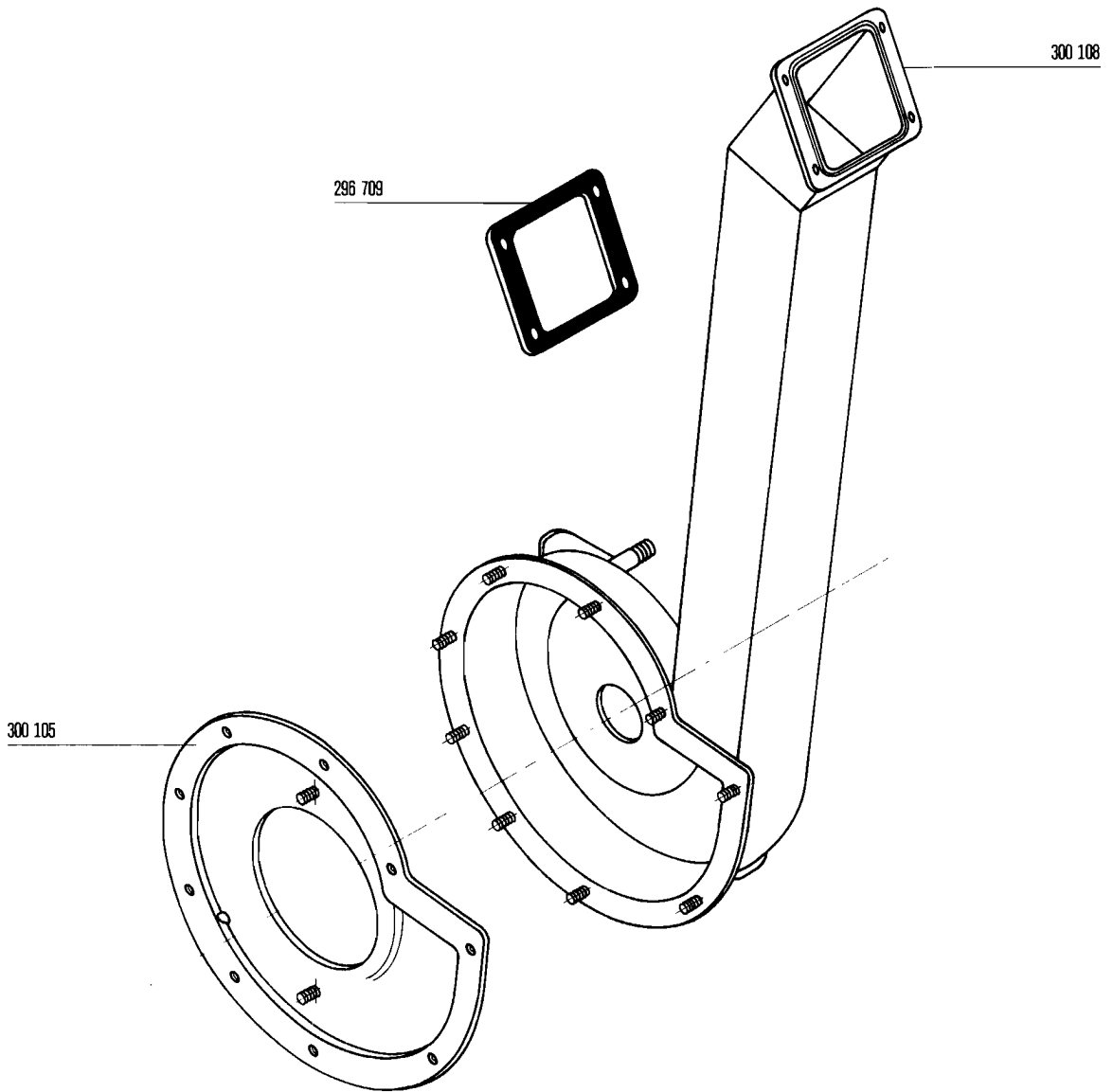
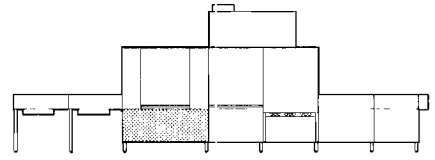
REFER TO CORRECTION SHEET

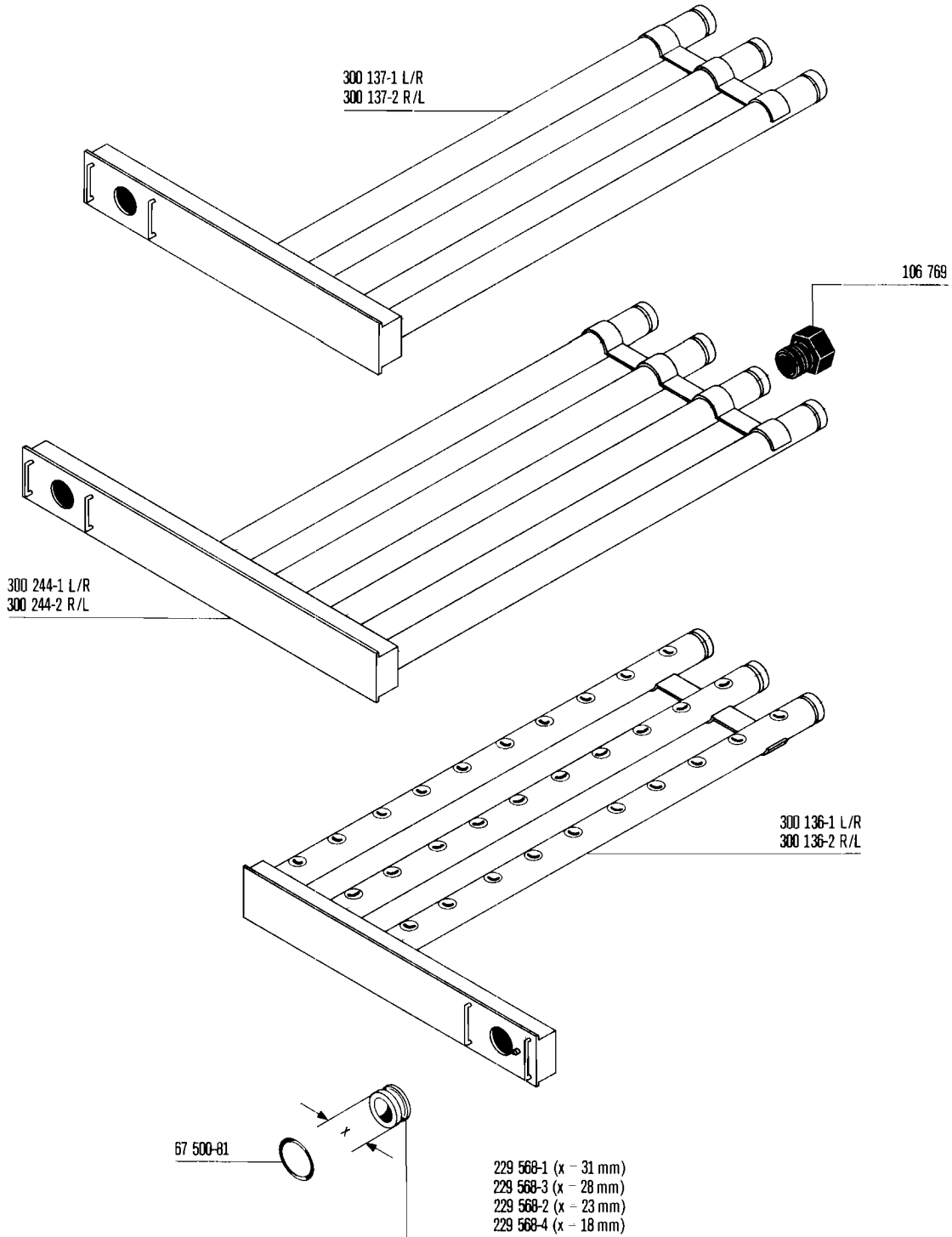
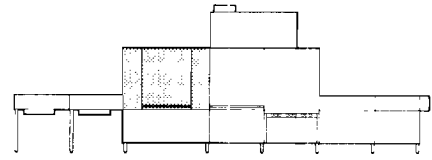


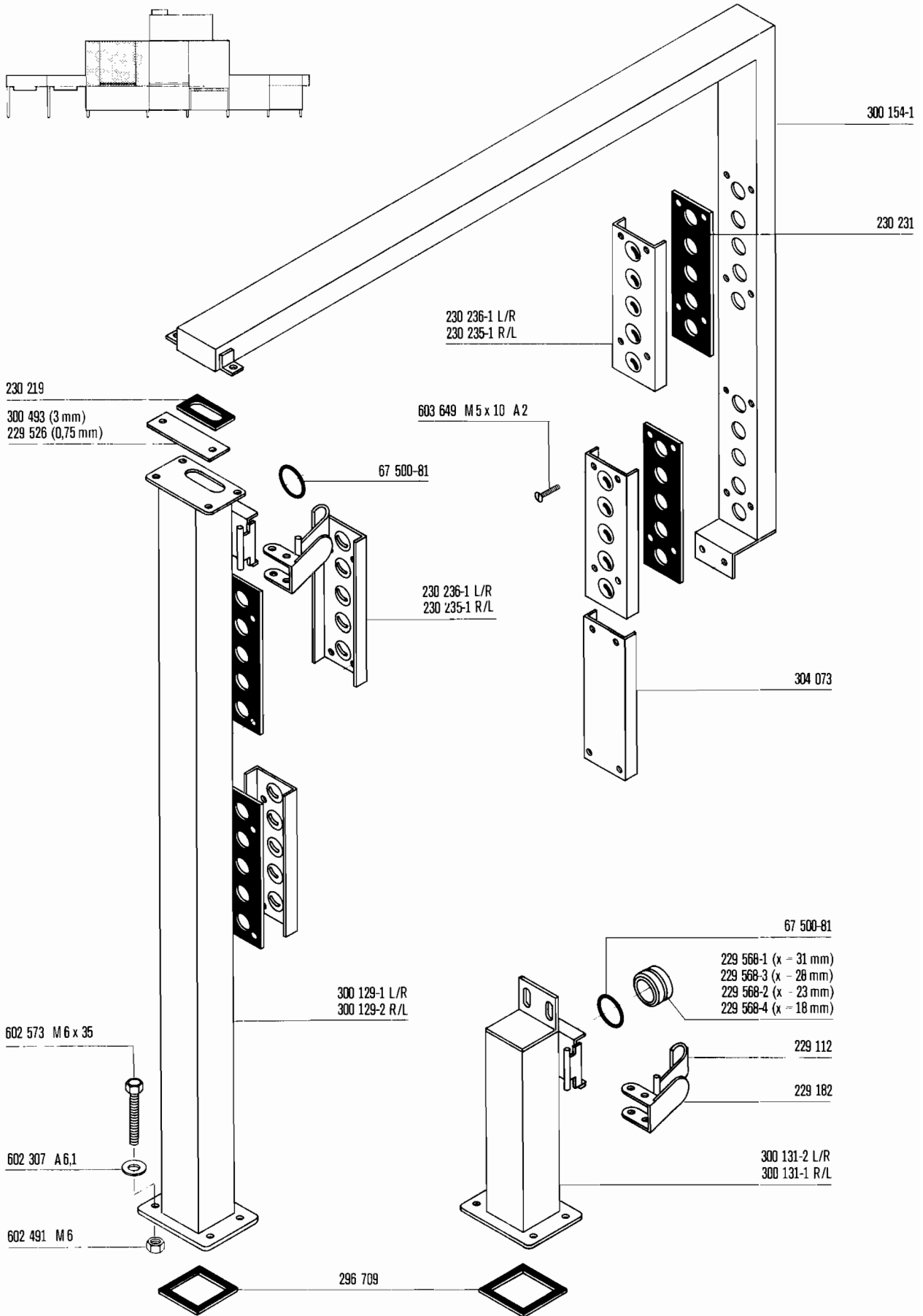


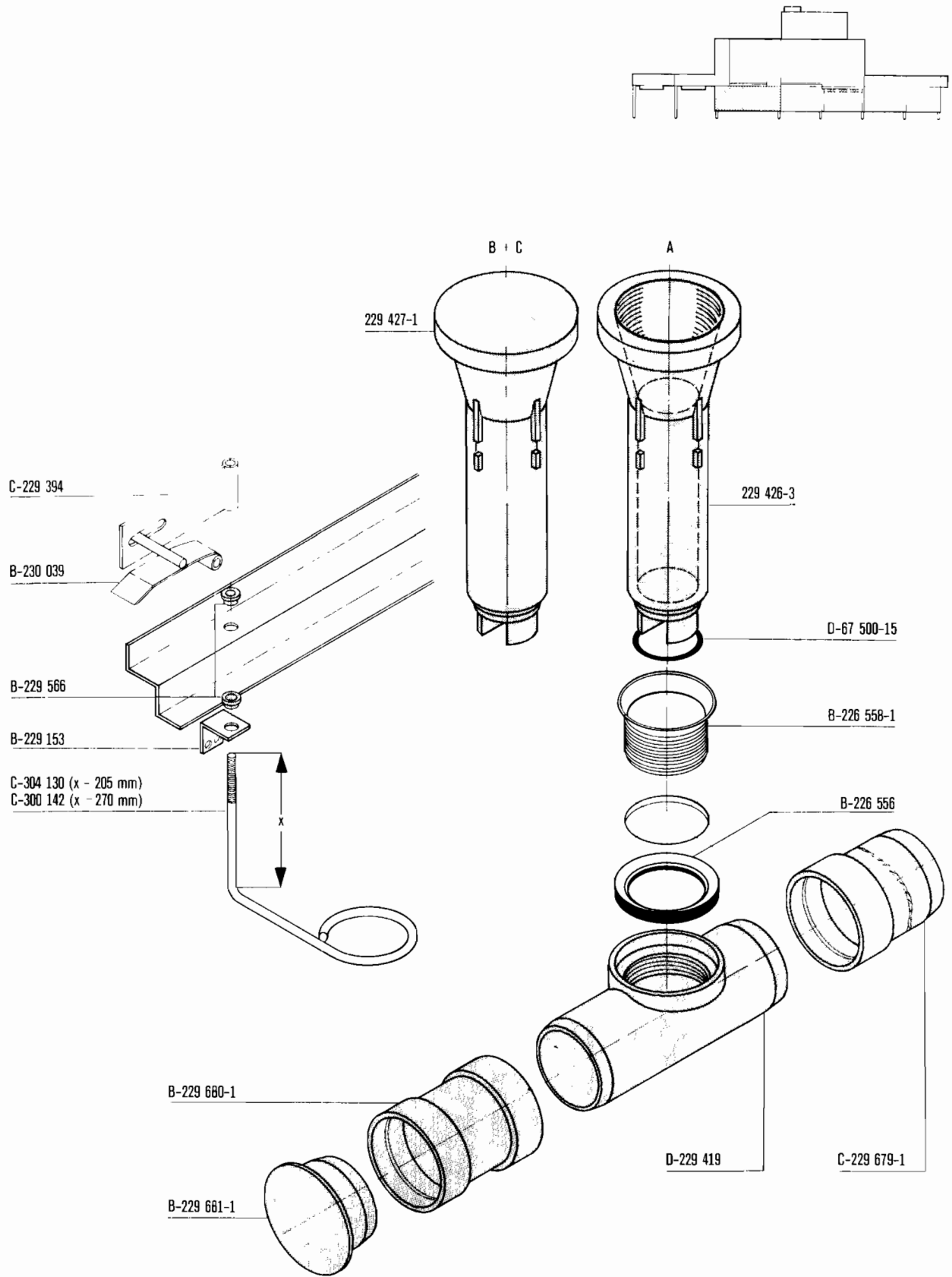
- steam
- hot water
- vapeur
- eau chaude
- Dampf
- Heißwasser
- stoom
- heet water



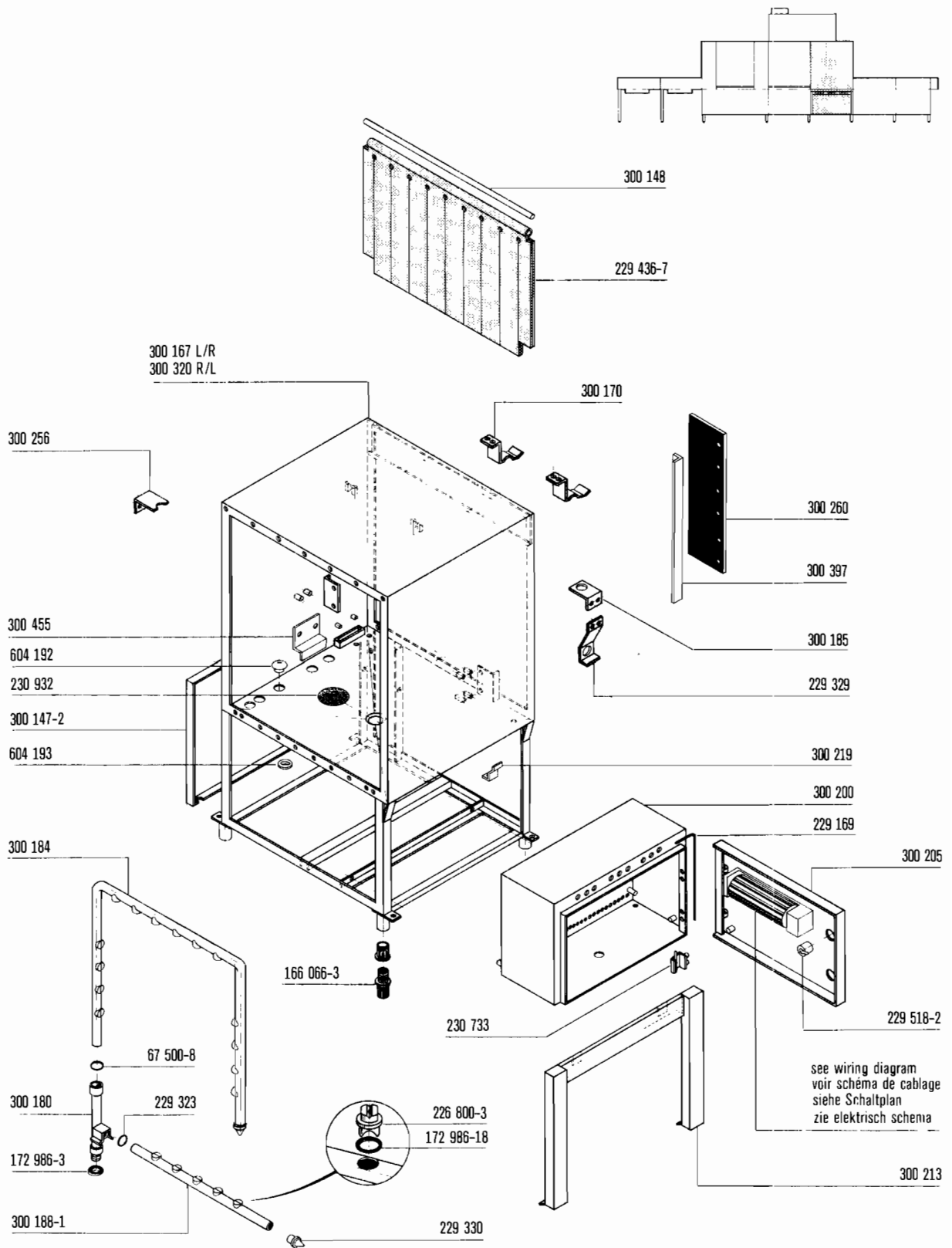


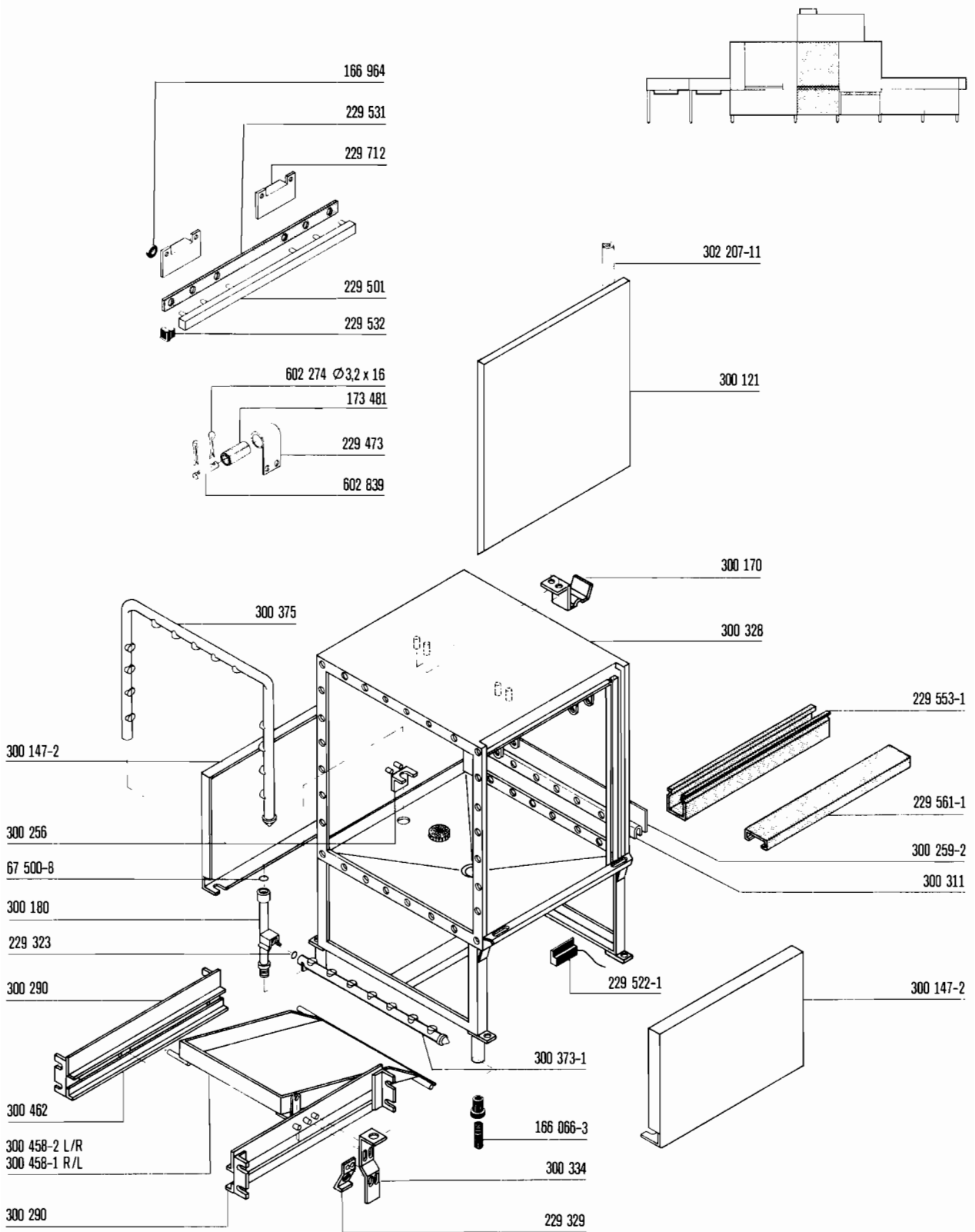


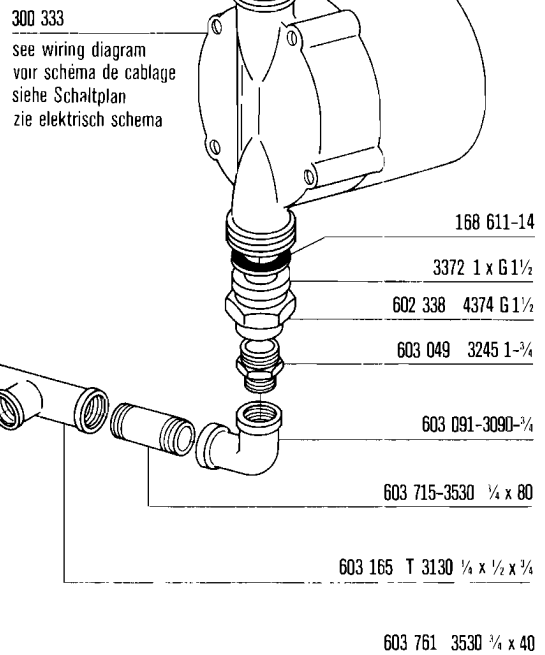
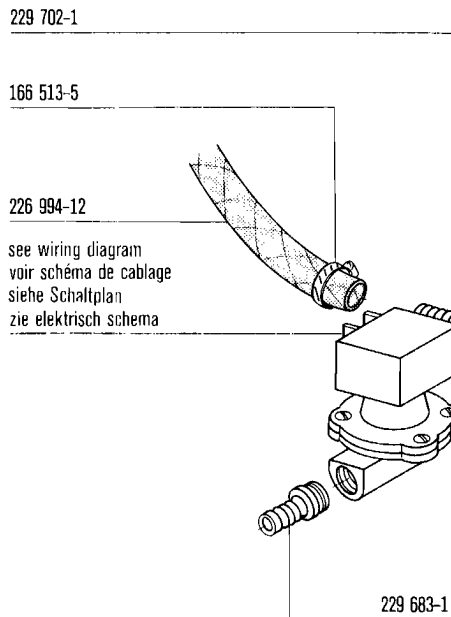
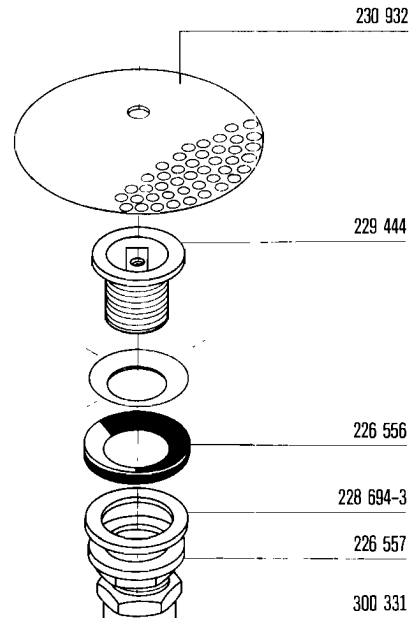
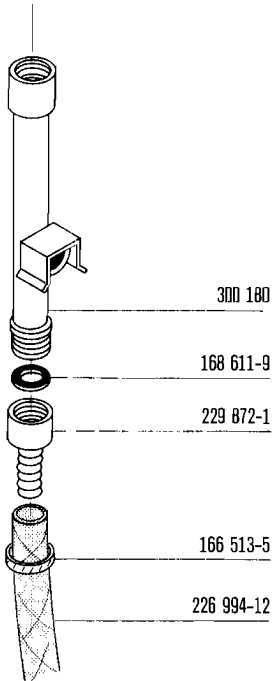
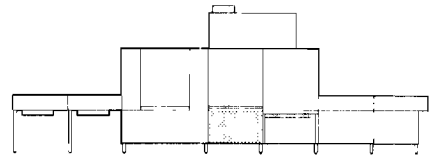


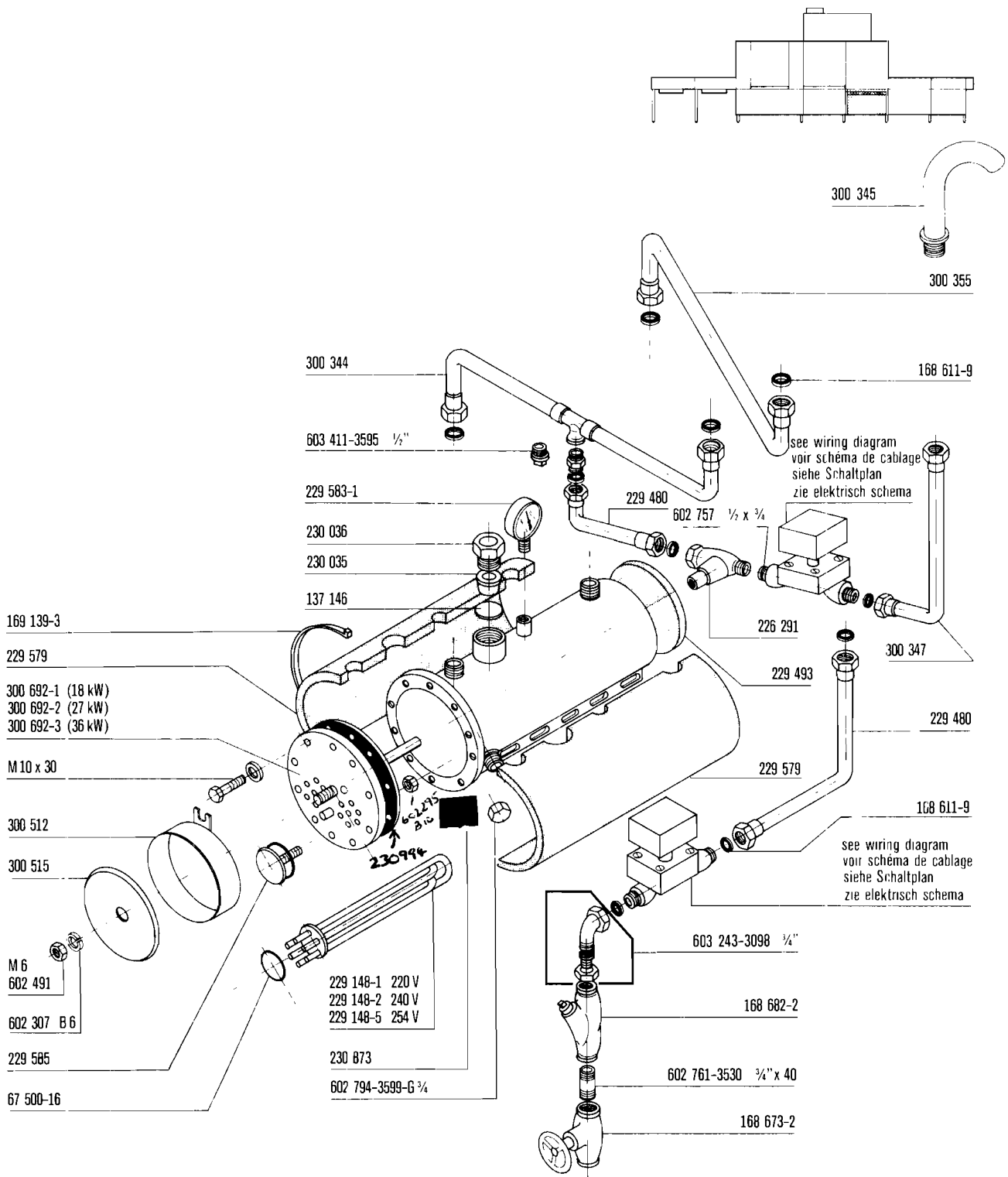


REFER TO CORRECTION SHEET

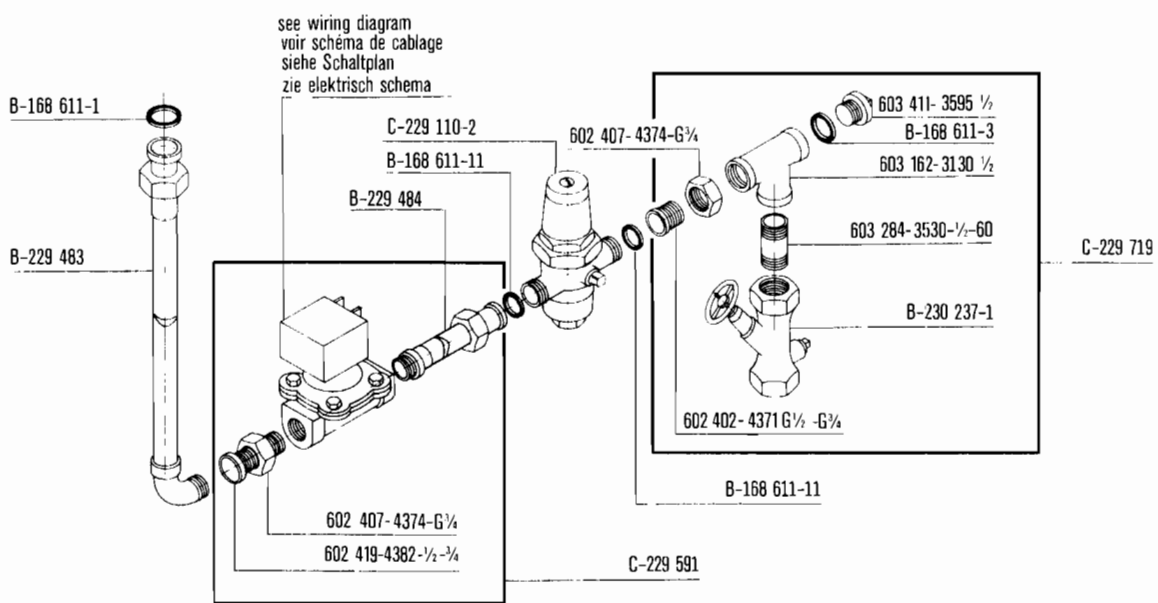
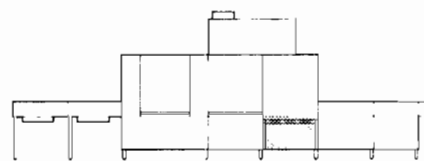


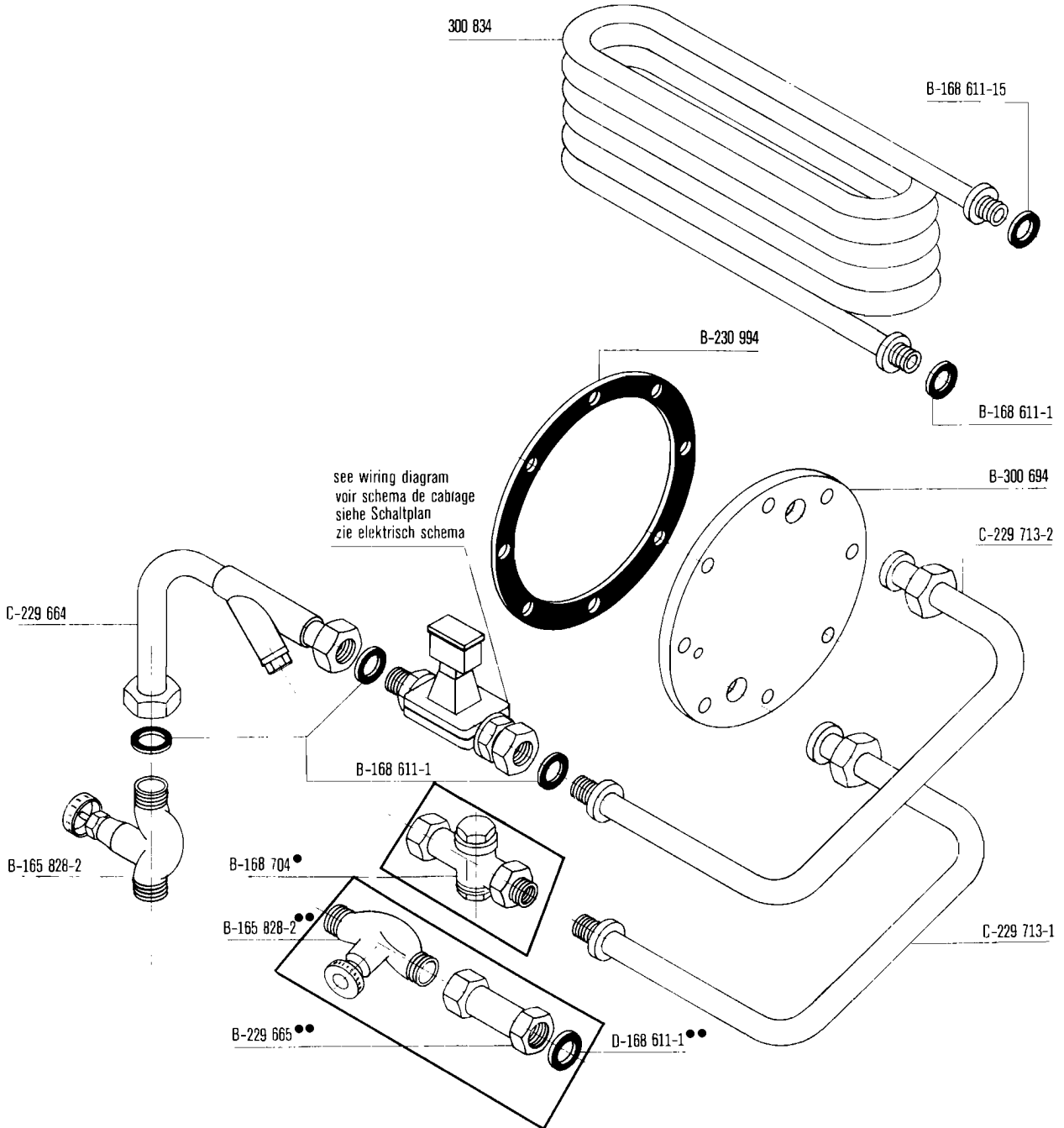
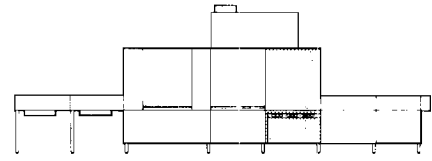






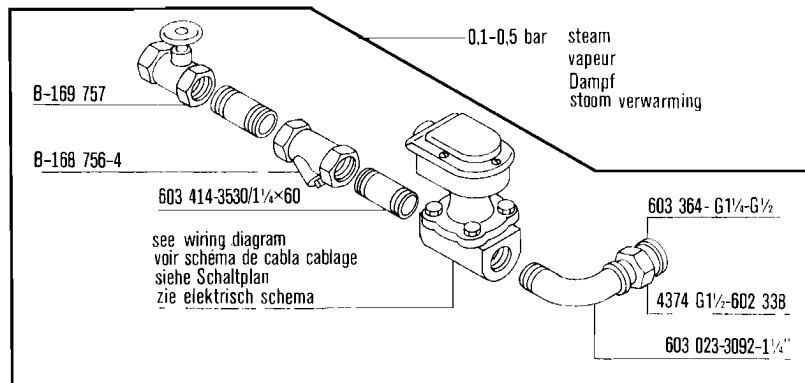
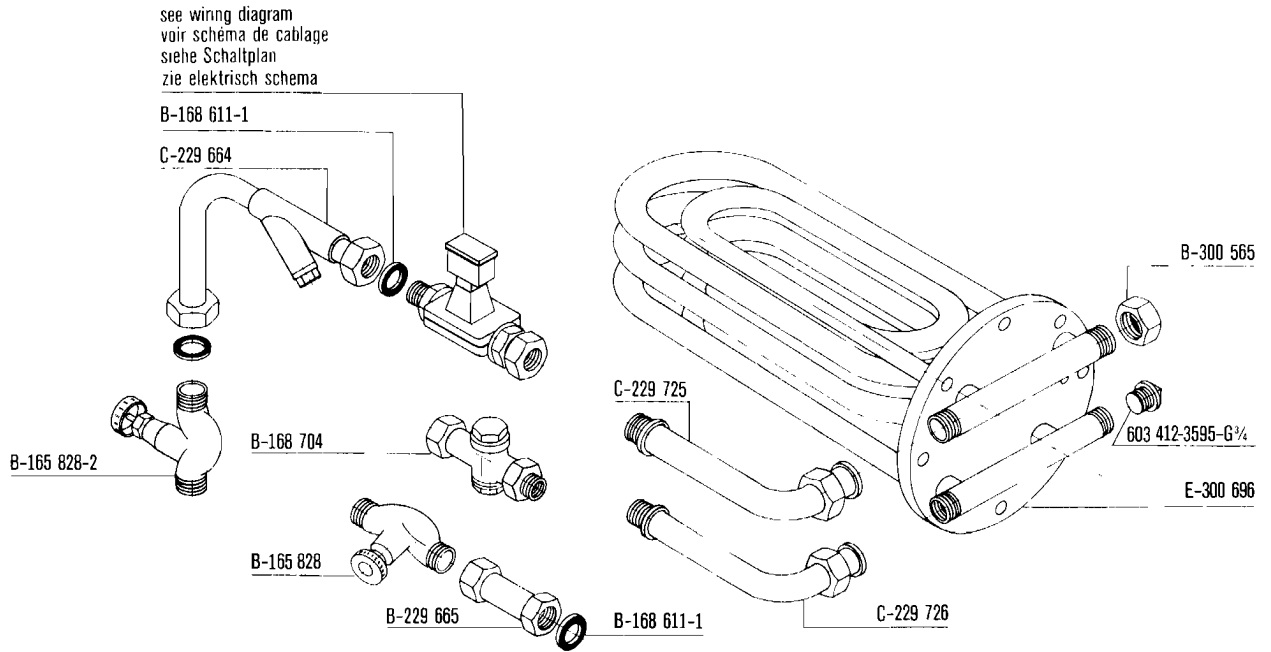
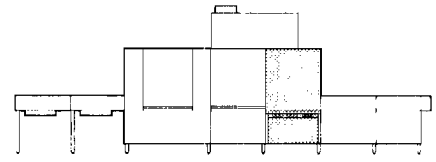
REFER TO CORRECTION SHEET



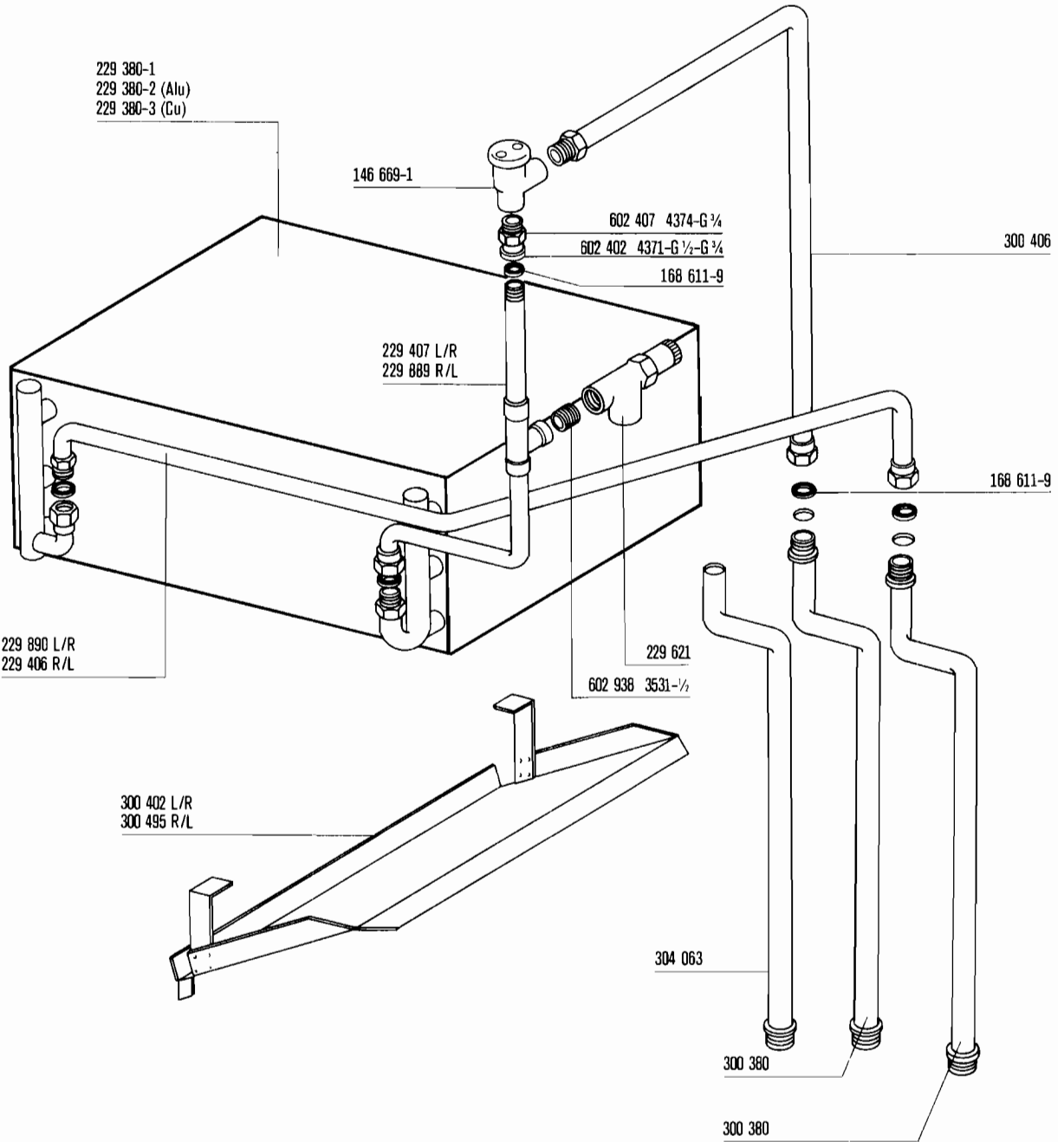
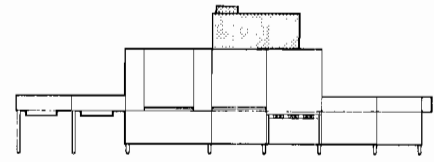


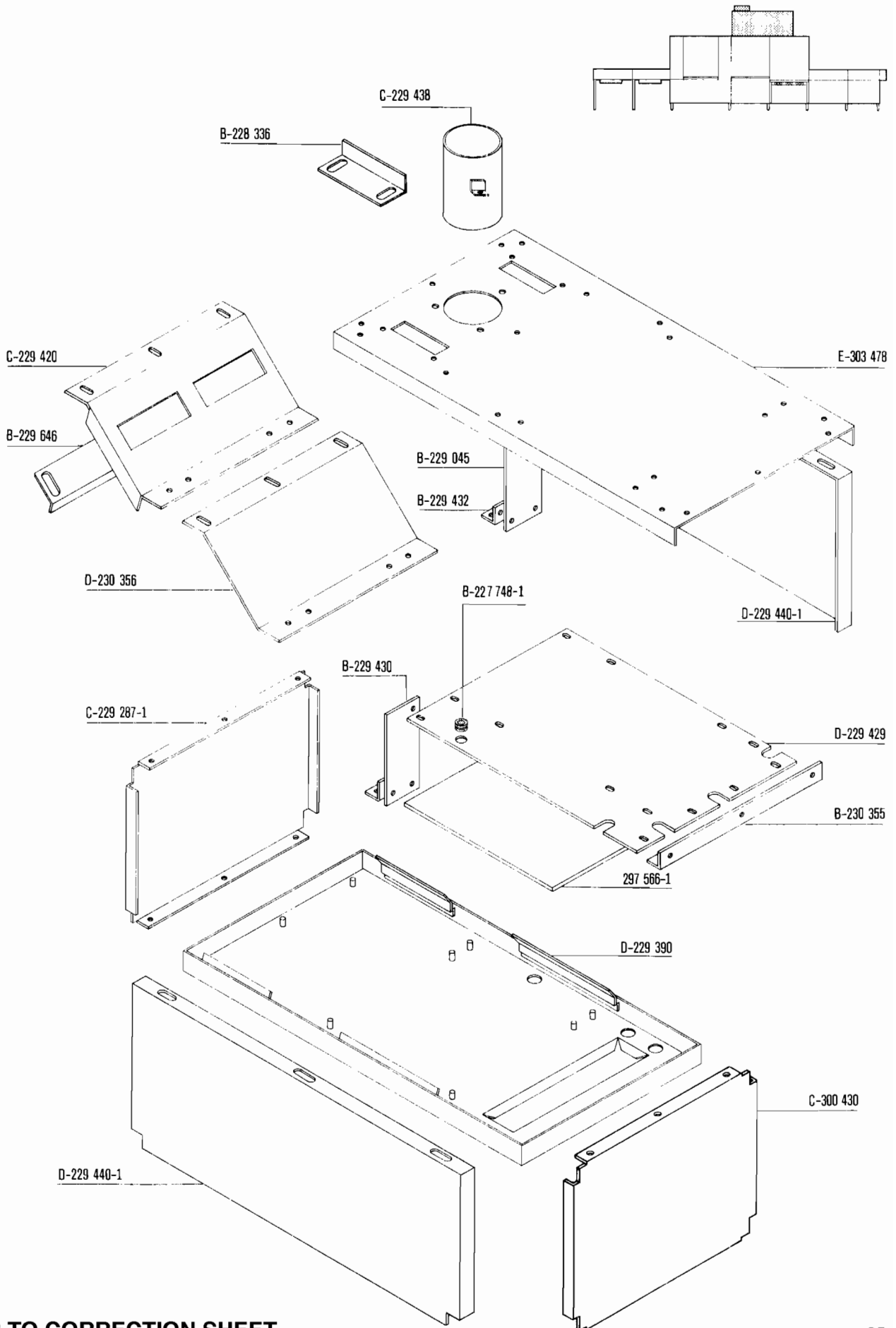
REFER TO CORRECTION SHEET

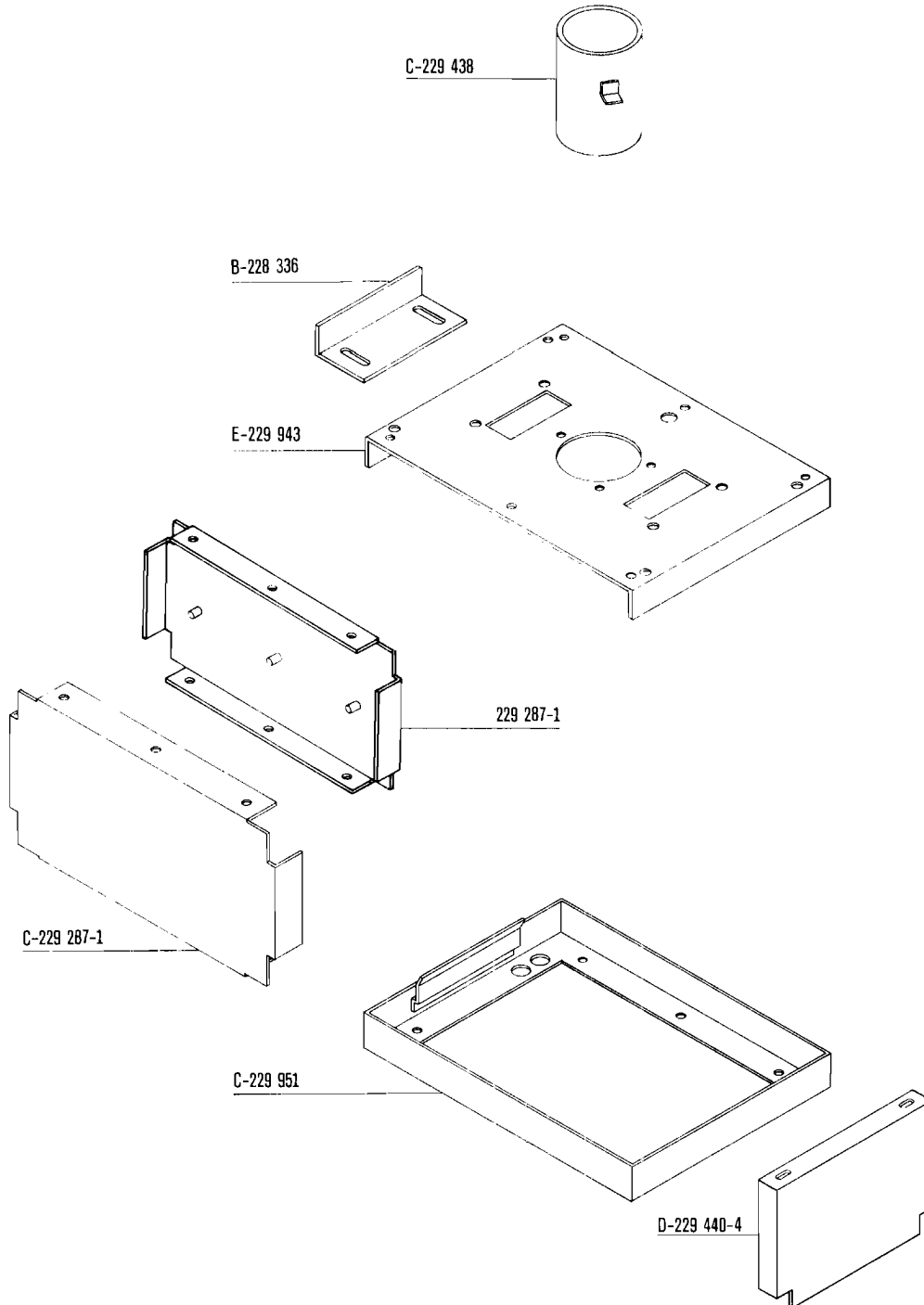
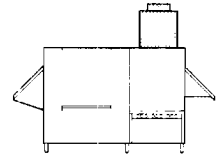
- steam
- hot water
- vapeur
- eau chaude
- Dampf
- Heißwasser
- stoom
- heet water

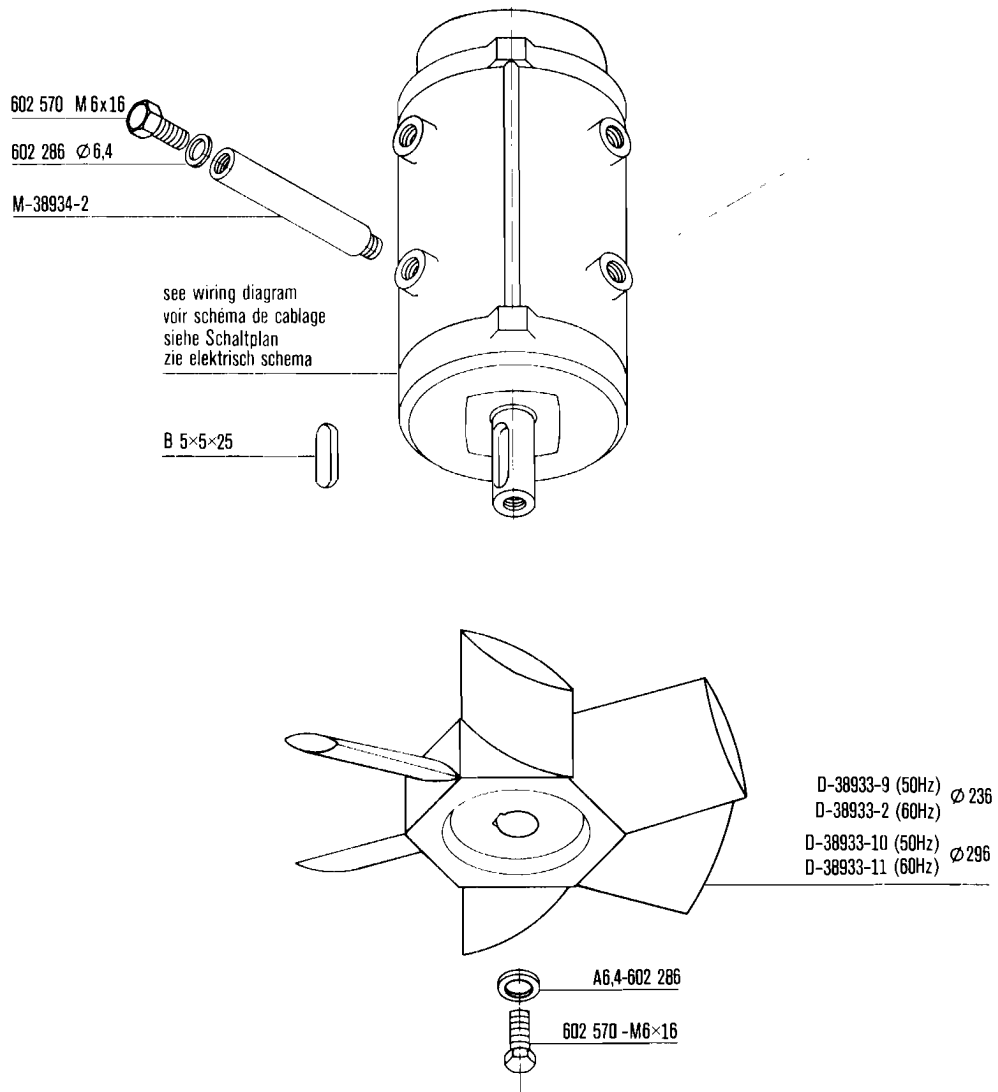
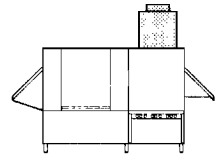


REFER TO CORRECTION SHEET

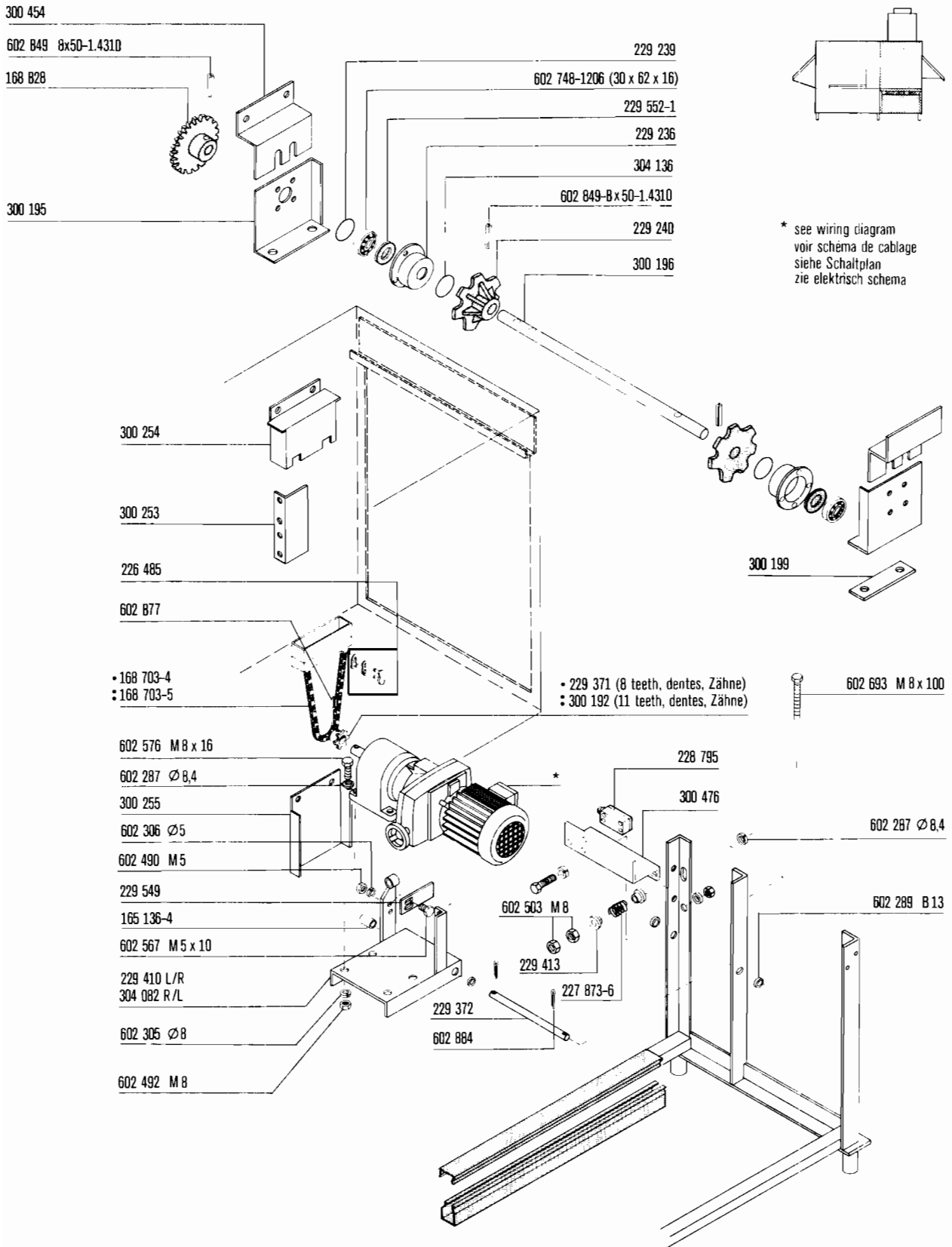




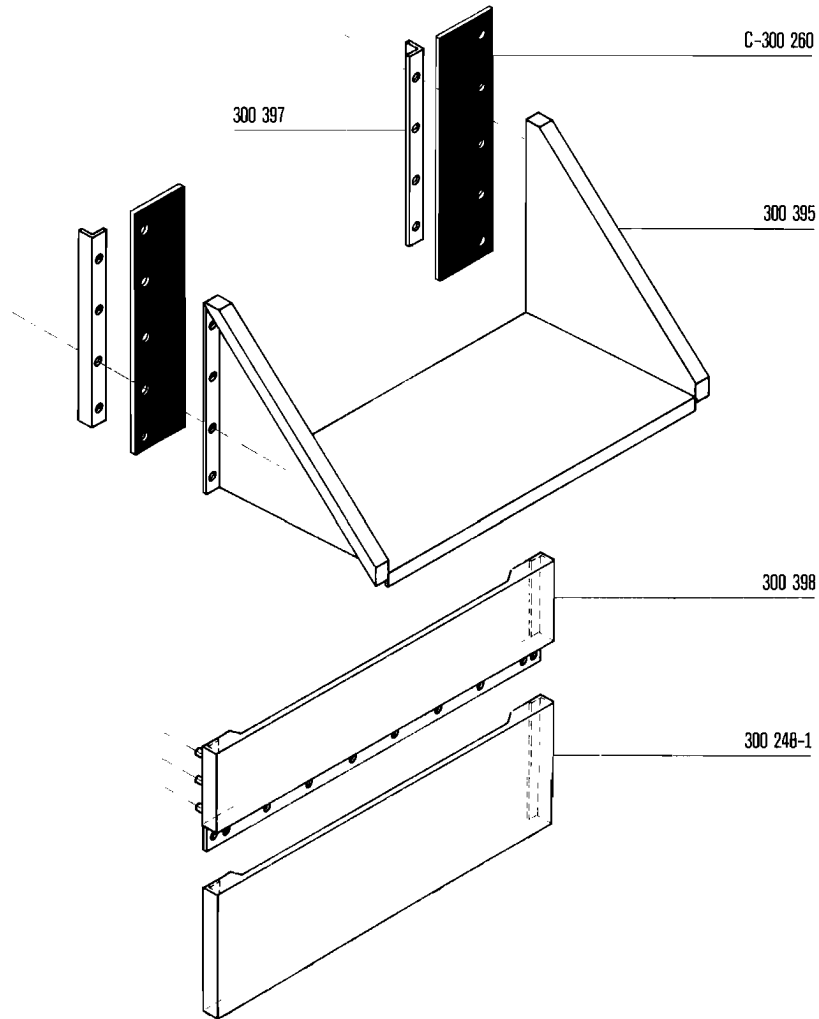
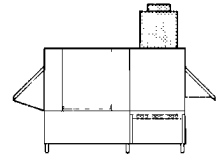


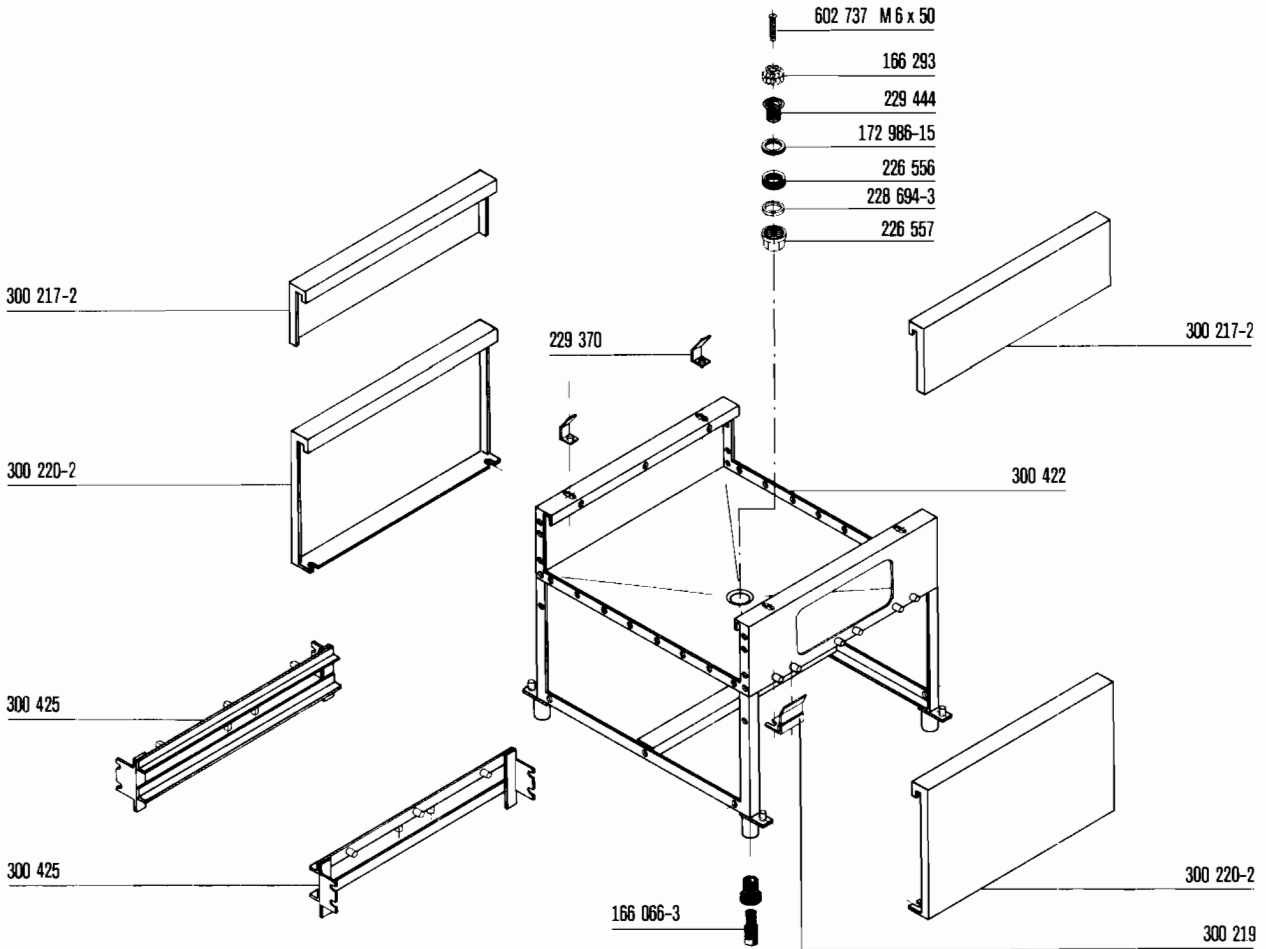
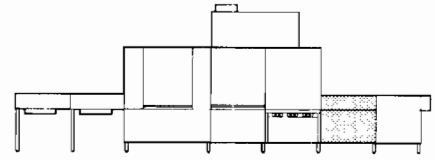


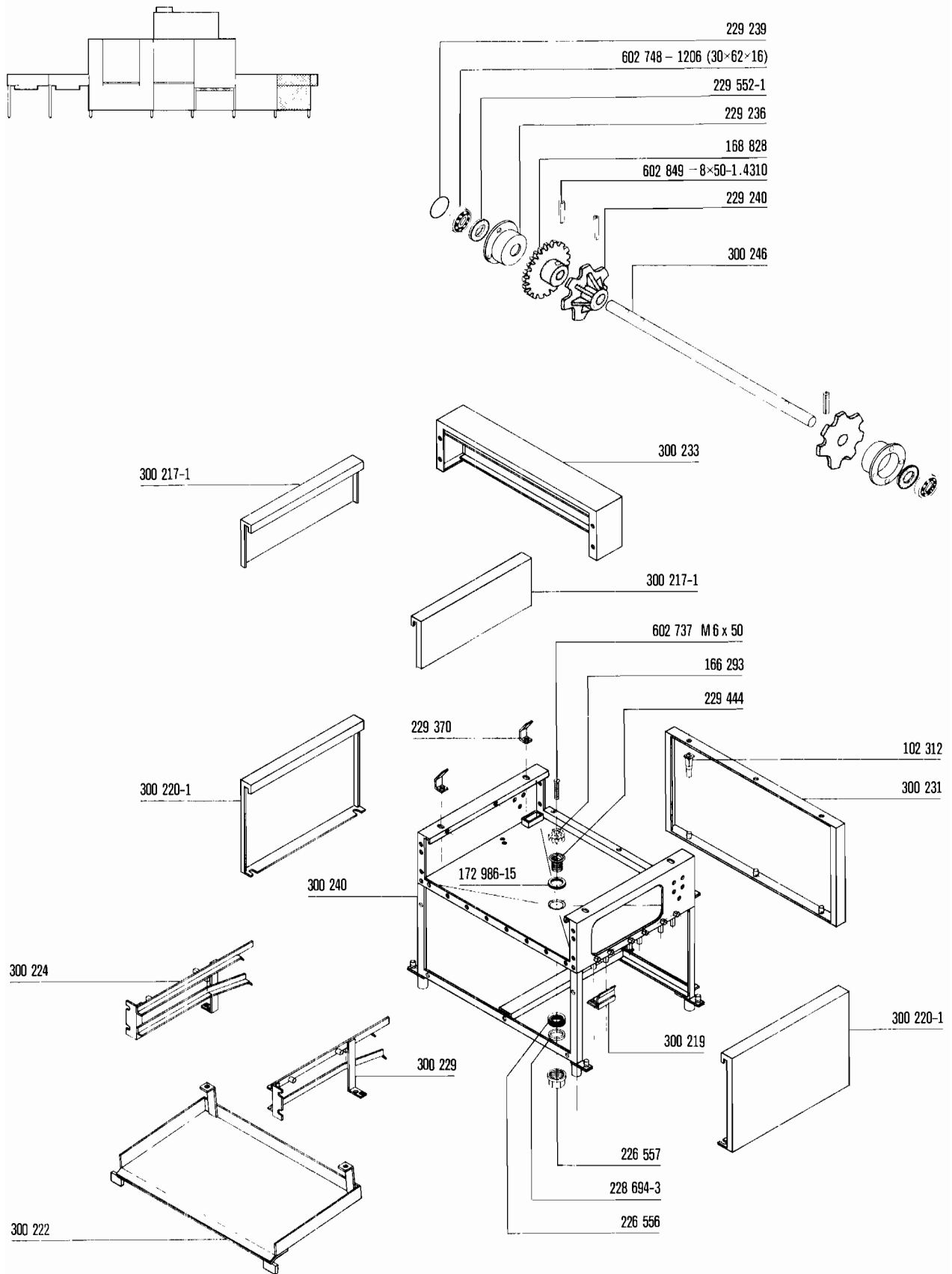
REFER TO CORRECTION SHEET



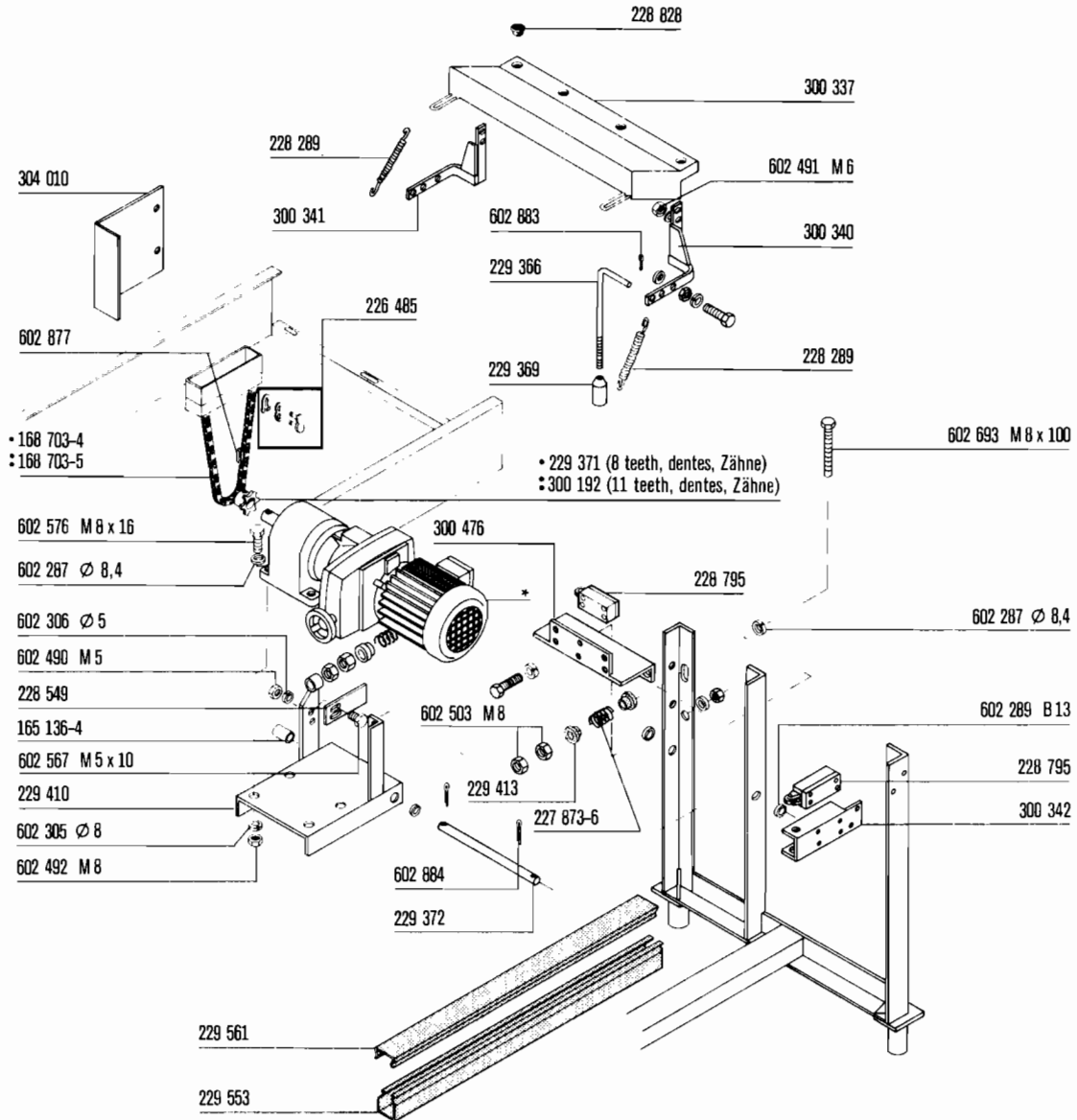
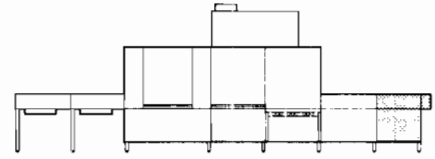
REFER TO CORRECTION SHEET



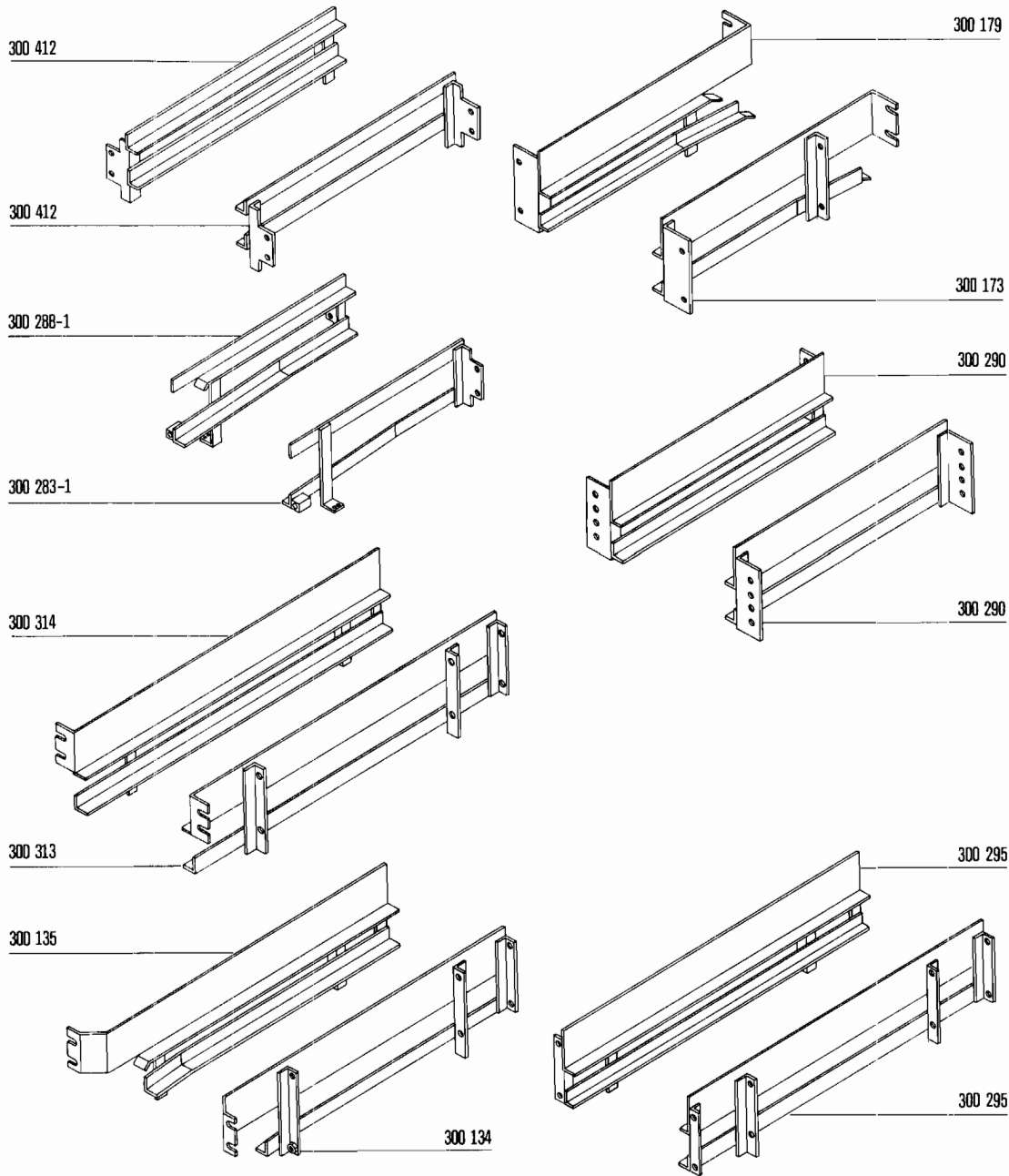


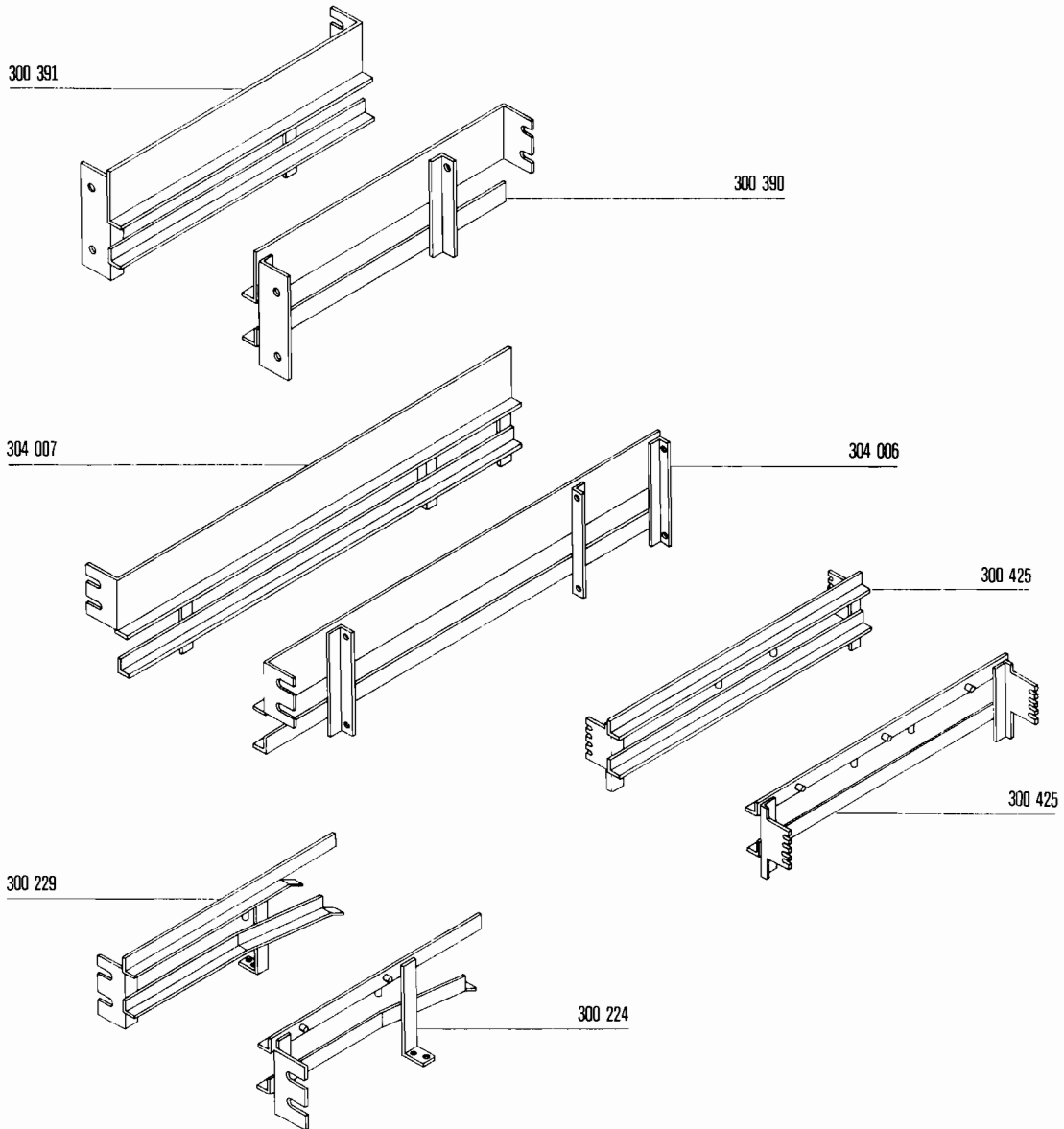


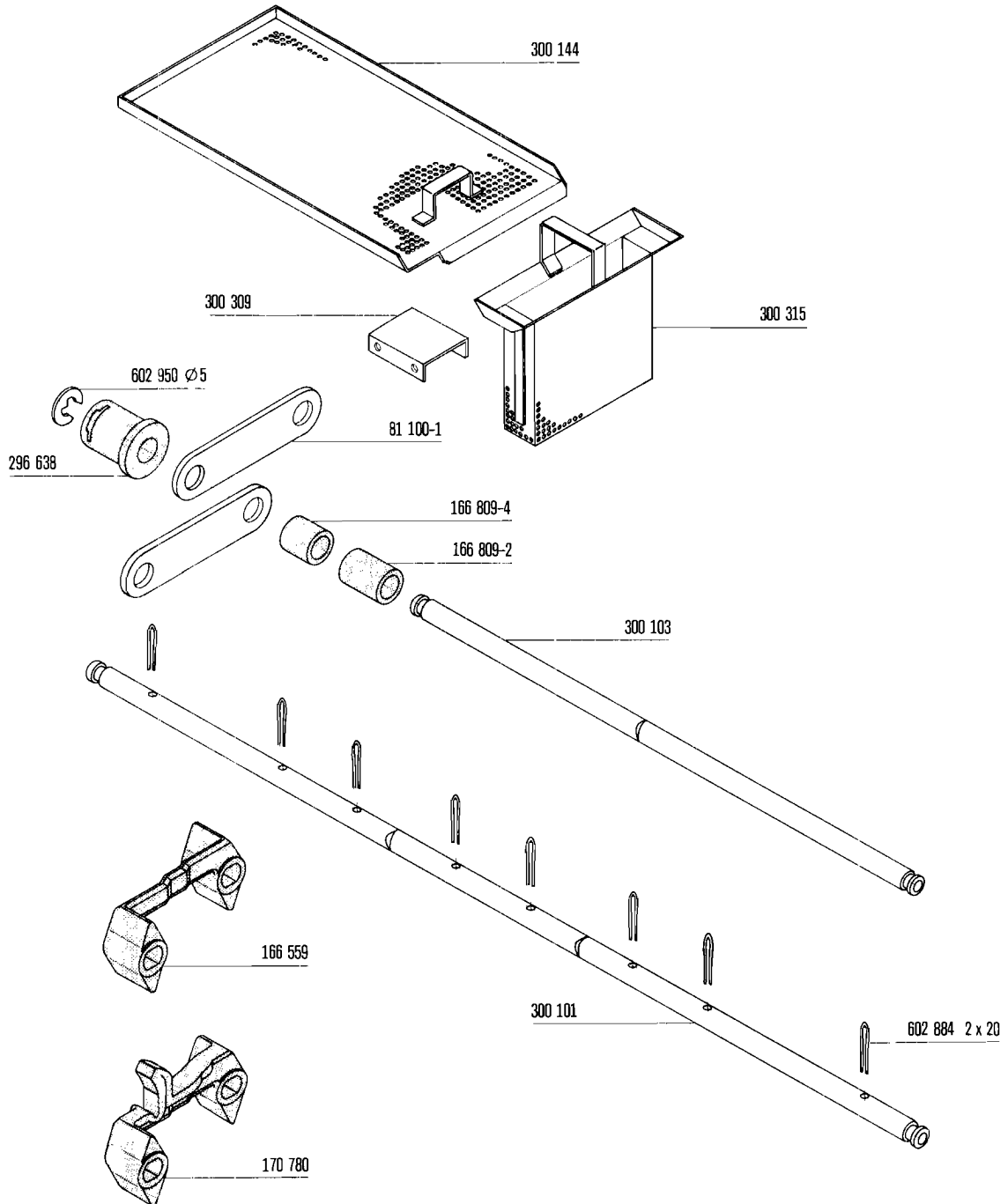
REFER TO CORRECTION SHEET



* see wiring diagram
voir schéma de cablage
siehe Schaltplan
zie elektrisch schema



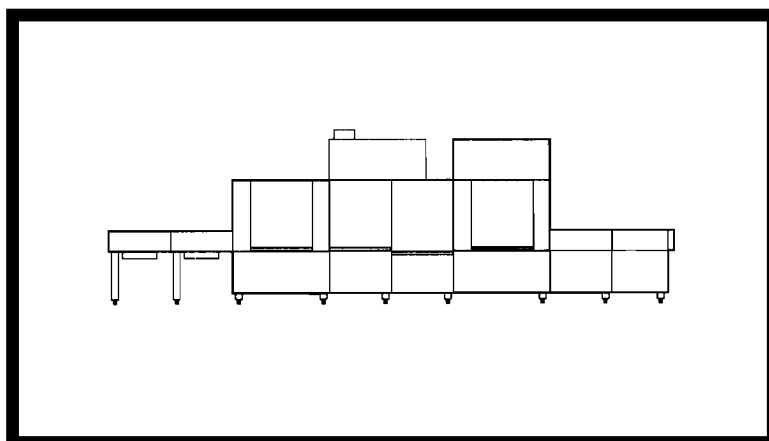






**Drier section
Zone de séchage
Trockenzone
Droogzône**

UWX



Contents

Drier section	4
Lower electric blower	5
Upper blower, electric	6
Tracks and tub	7
Upper blower	8
Blower steam + hot water	9
High pressure blower	10

Inhalt

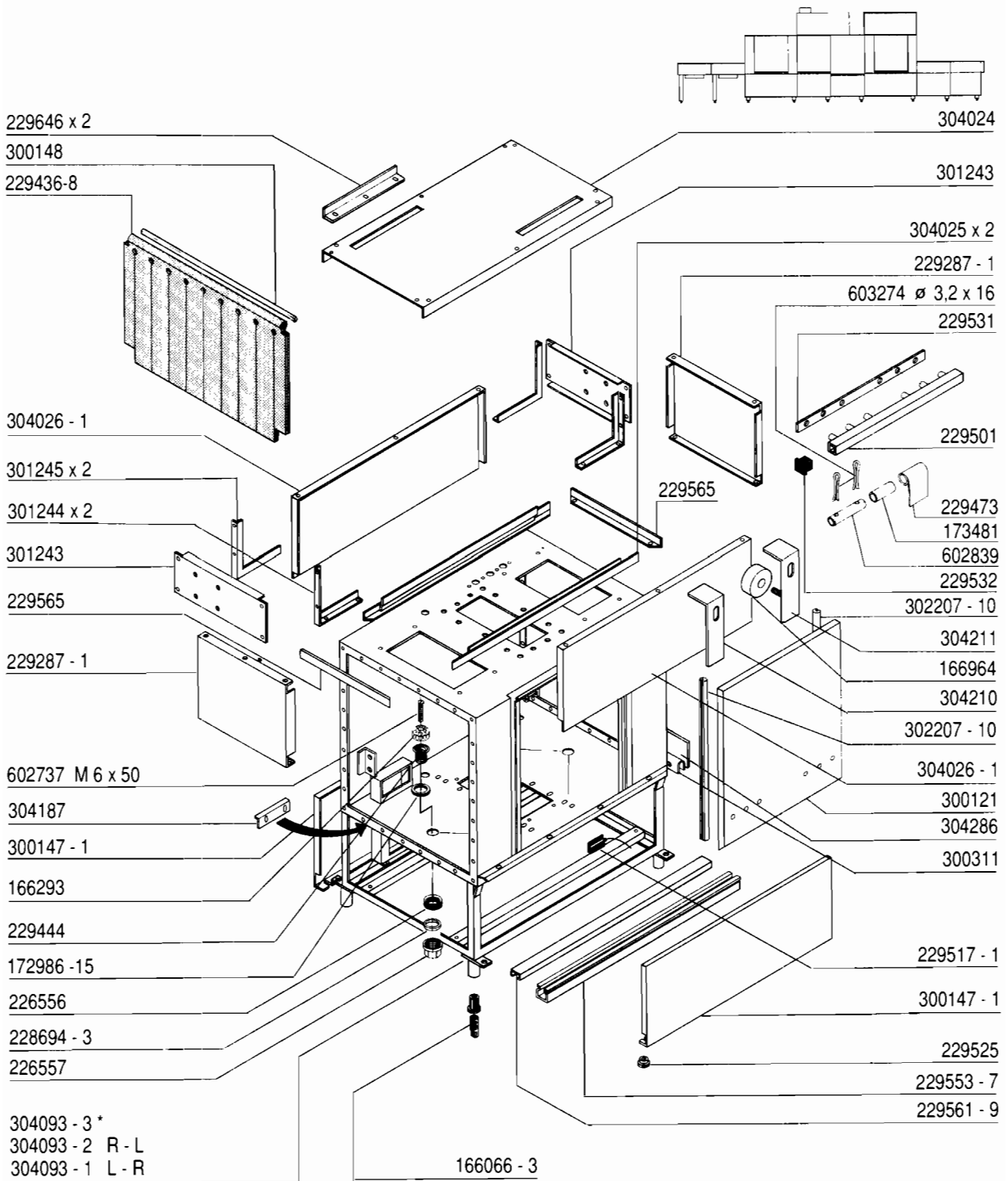
Trockenzone	4
Unteres Trocknungsgebläse, elektrisch	5
Trocknungsgebläse oben, elektrisch	6
Laufschiene und Wanne	7
Trocknungsgebläse oben	8
Trocknungsgebläse, Dampf + Heißwasser	9
Hochdruckausblasung	10

Sommaire

Zone de séchage	4
Soufflage inférieur, électrique	5
Soufflage supérieur, électrique	6
Rails et cuve	7
Soufflage supérieur	8
Soufflage vapeur + eau surchauffée	9
Soufflage à haute pression	10

Inhoud

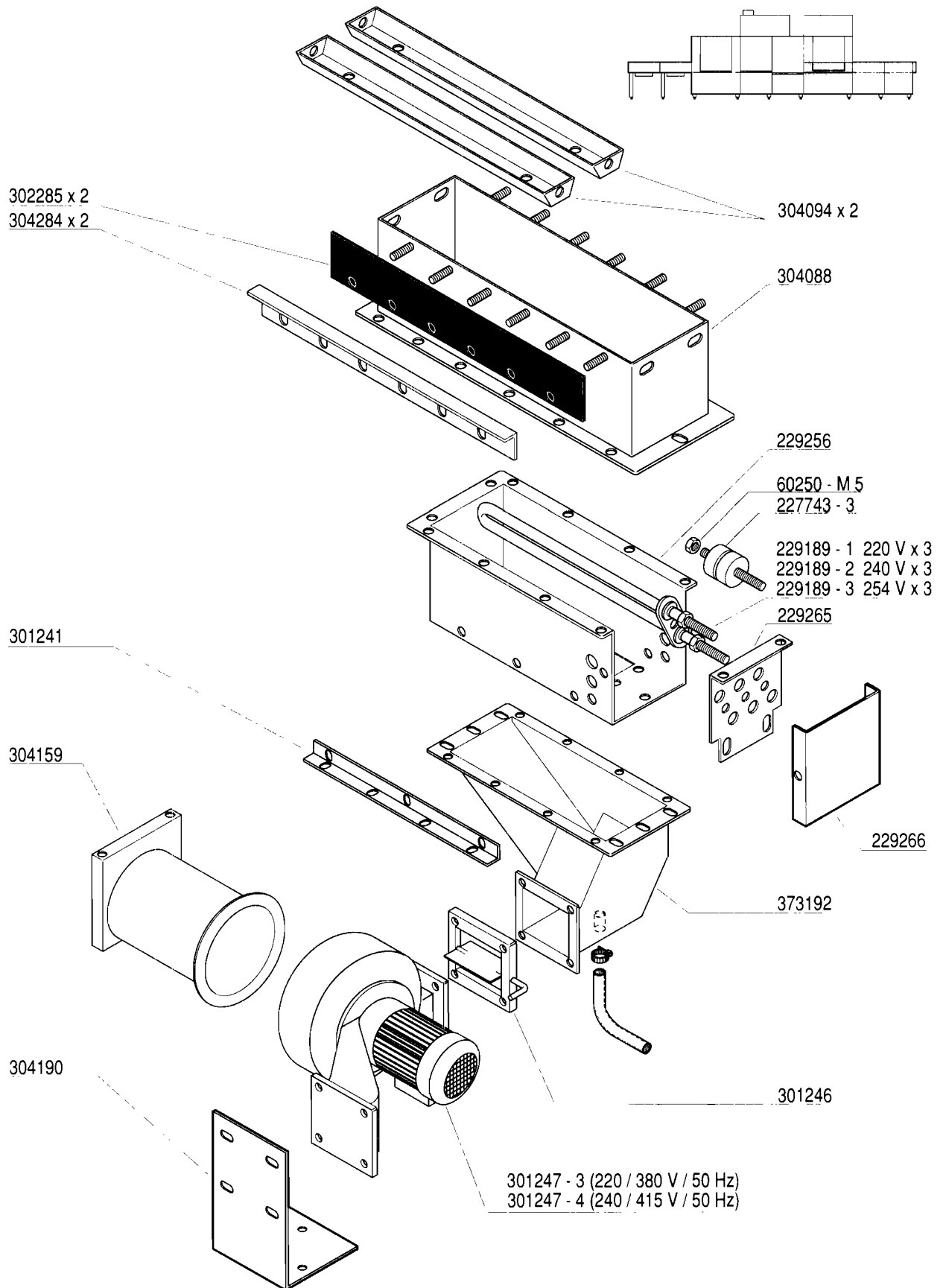
Droogzone	4
Onder ventilator van droger, elektrisch	5
Boven ventilator van droger, elektrisch	6
Rails en kuip	7
Boven ventilator van droger	8
Ventilator van droger stoom + heet water	9
Hogedruk ventilator	10

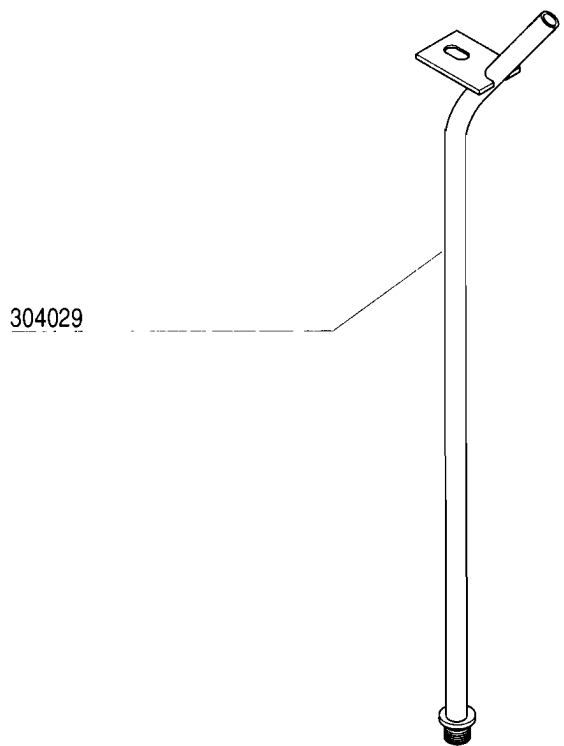
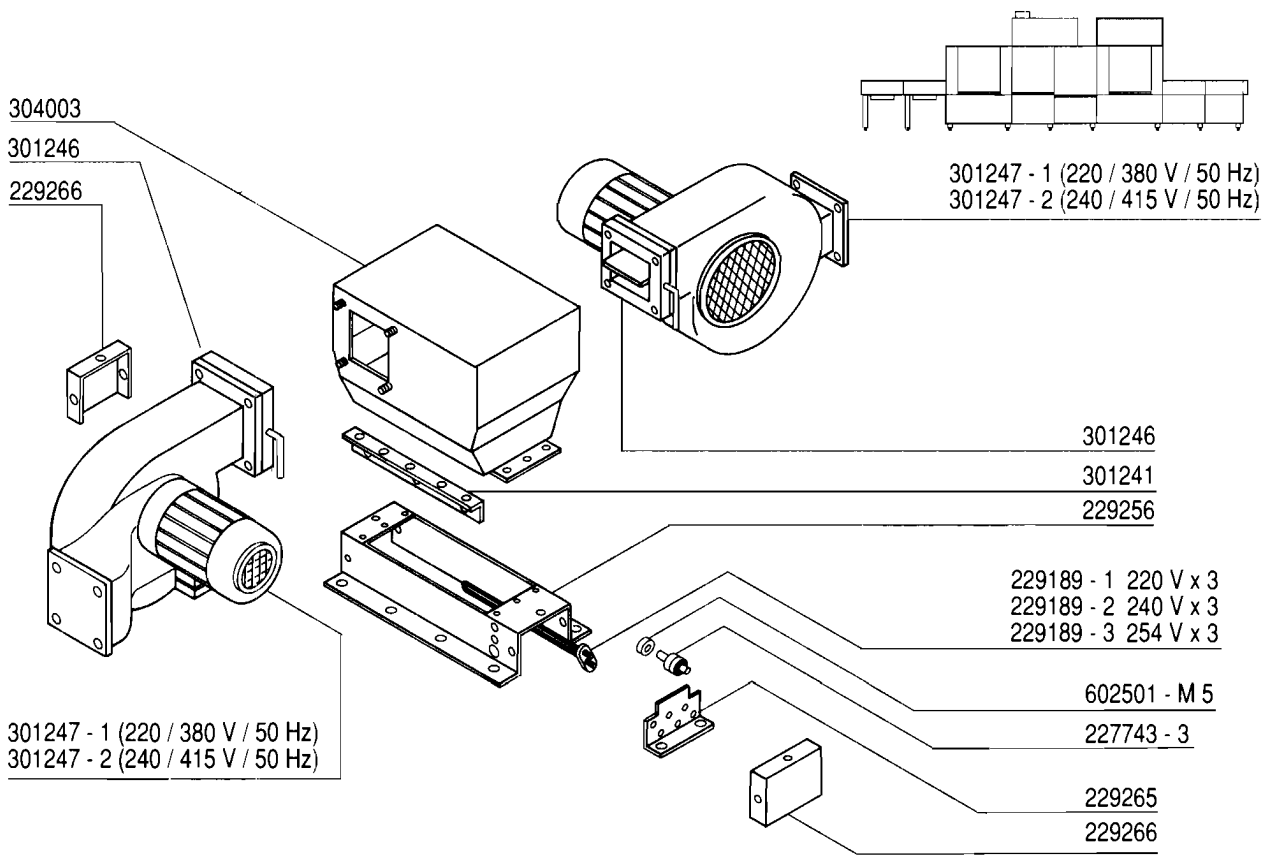


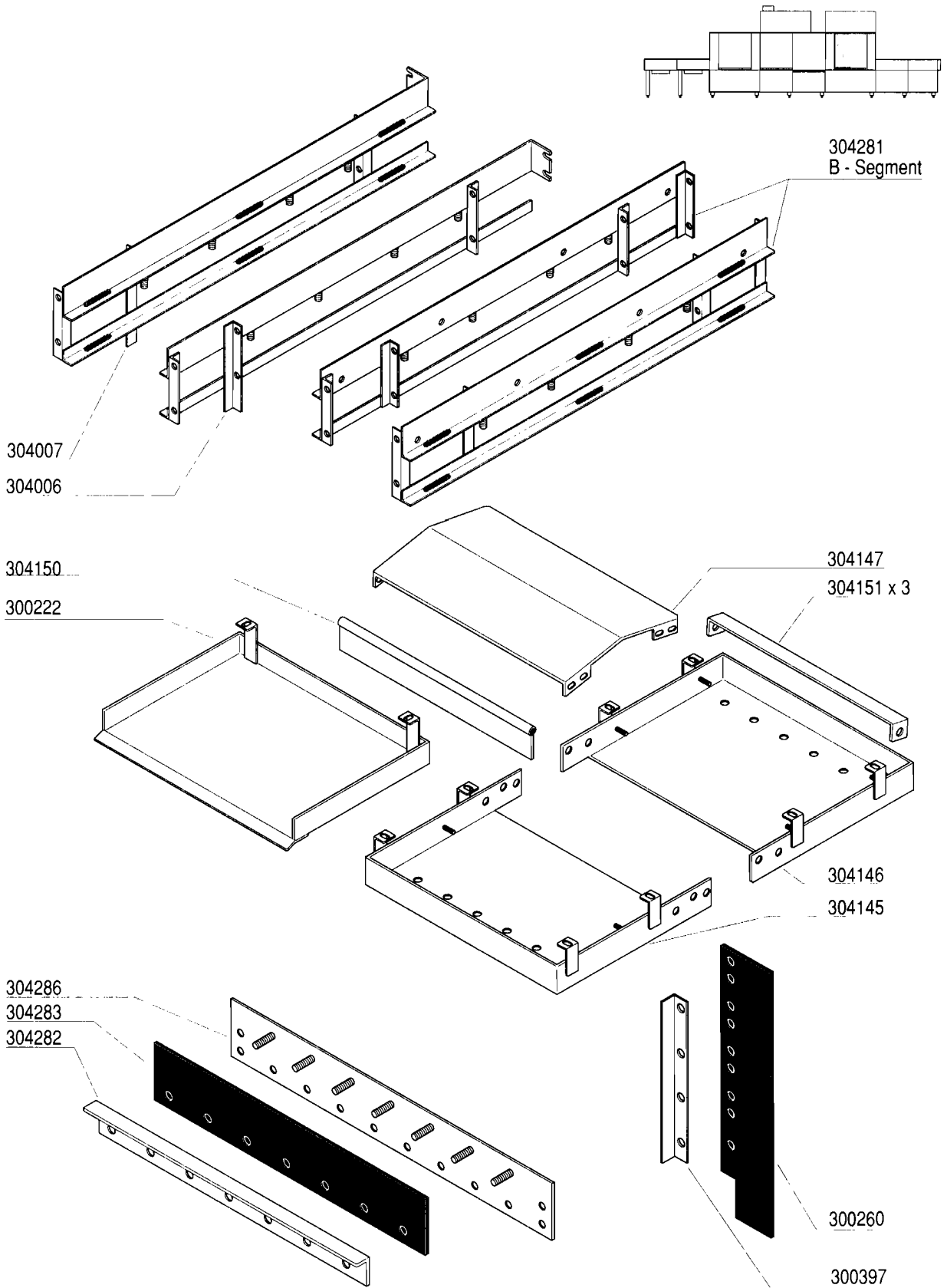
Interspace
Section intermédiaire
Zwischenstrecke
Tussentraject

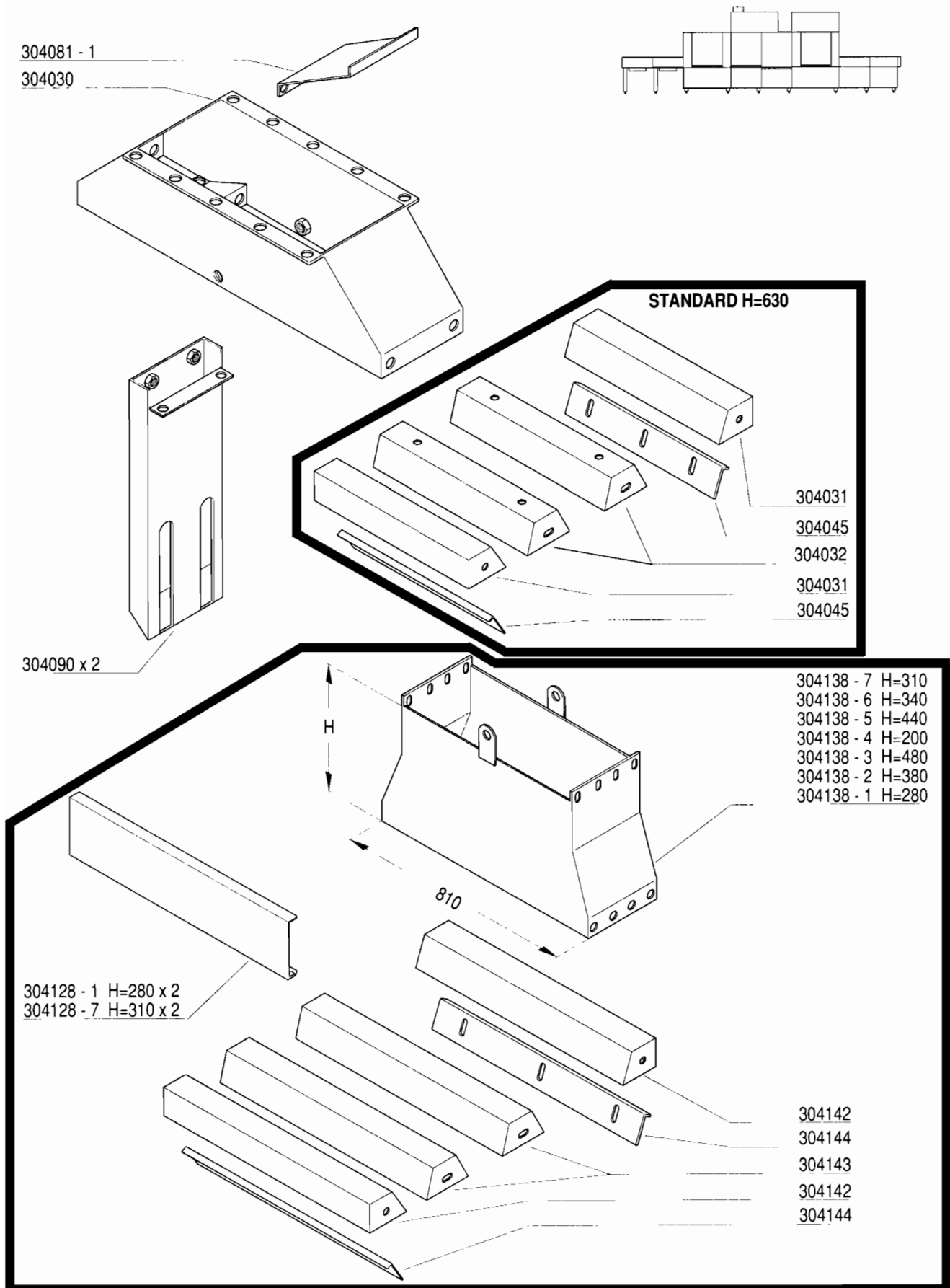
R - L = right - left
droite - gauche
Rechts - Links

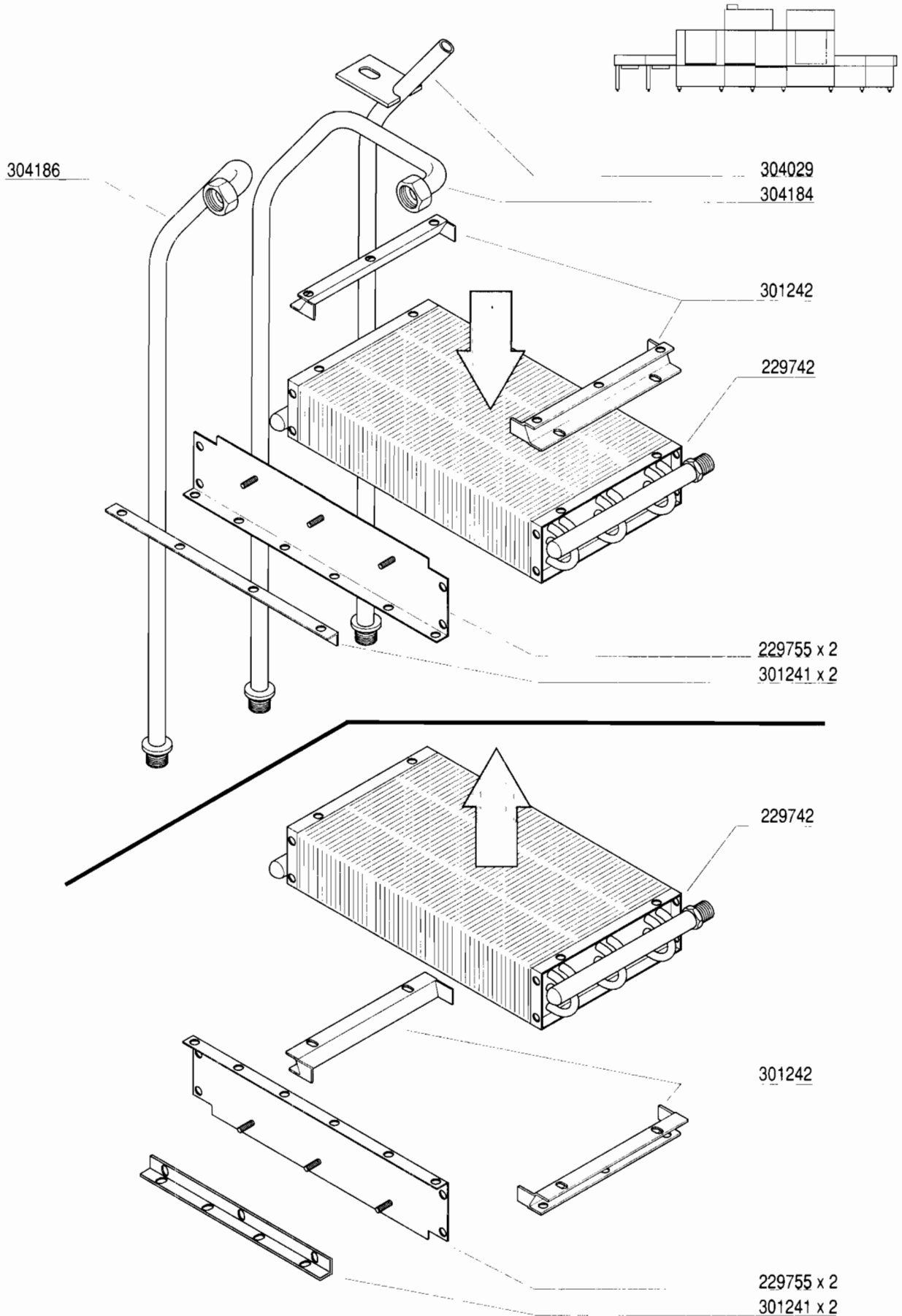
L - R = left - right
gauche - droite
Links - Rechts

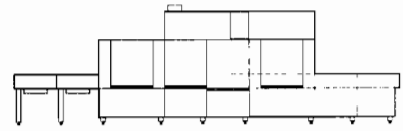




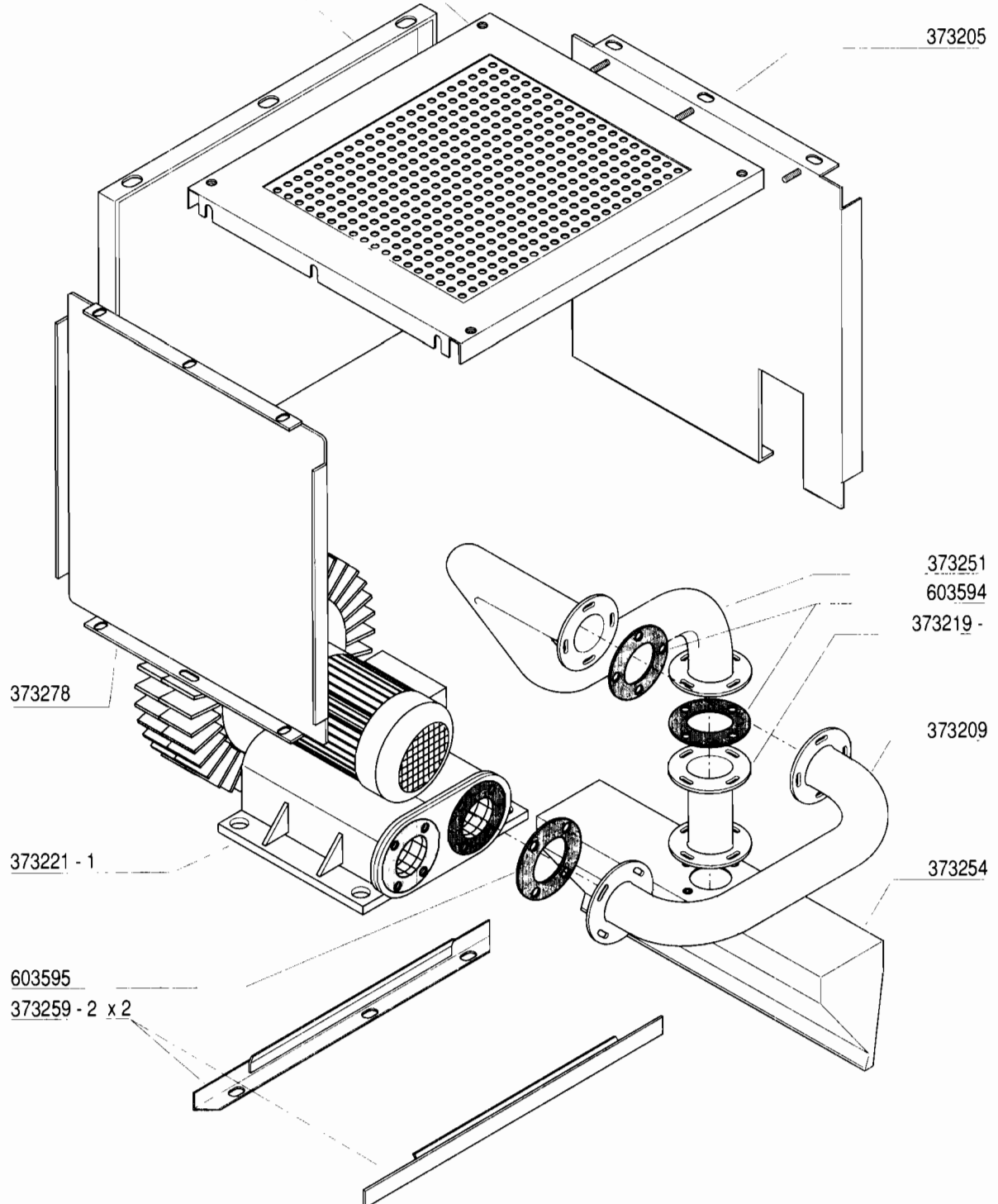




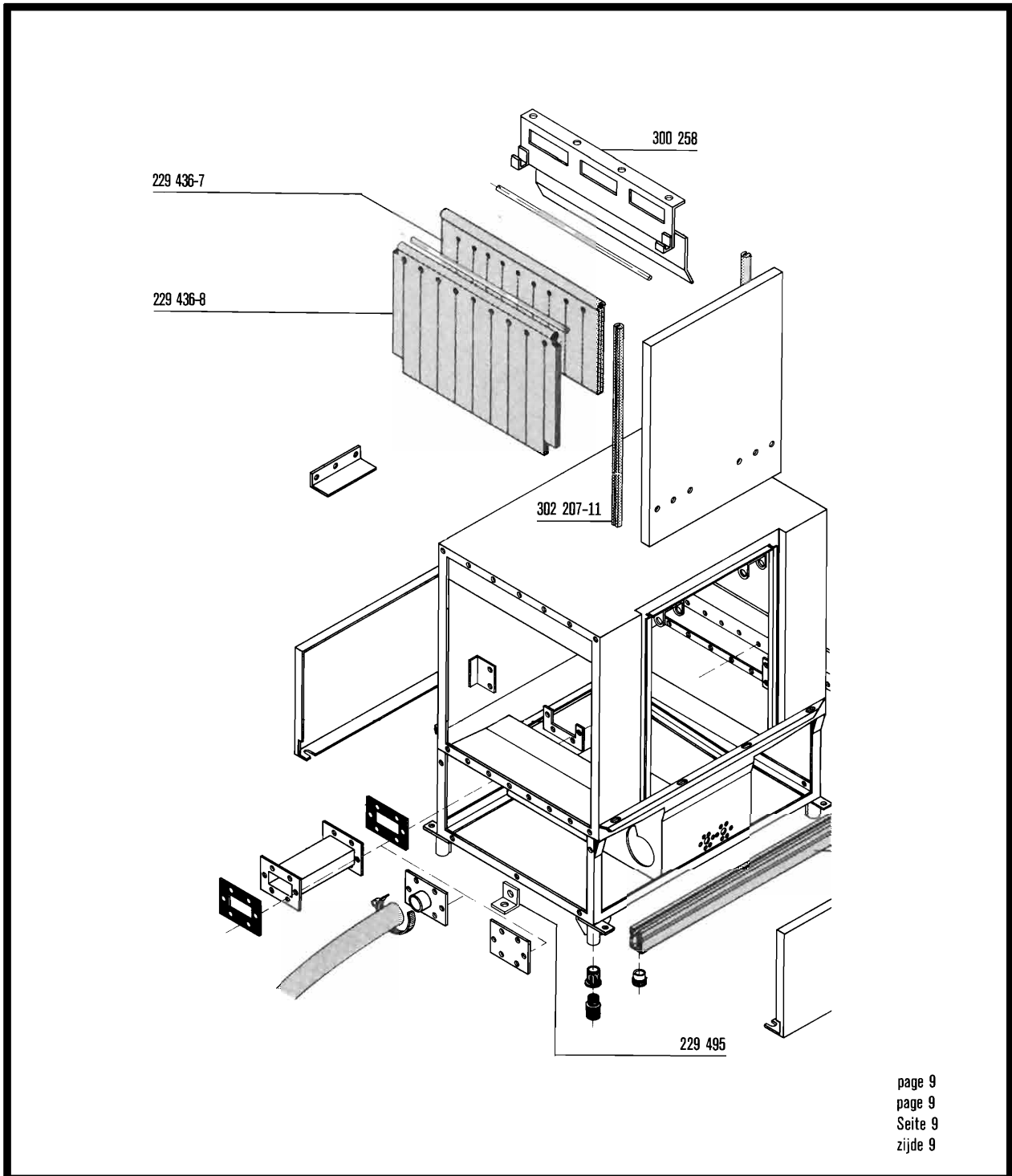




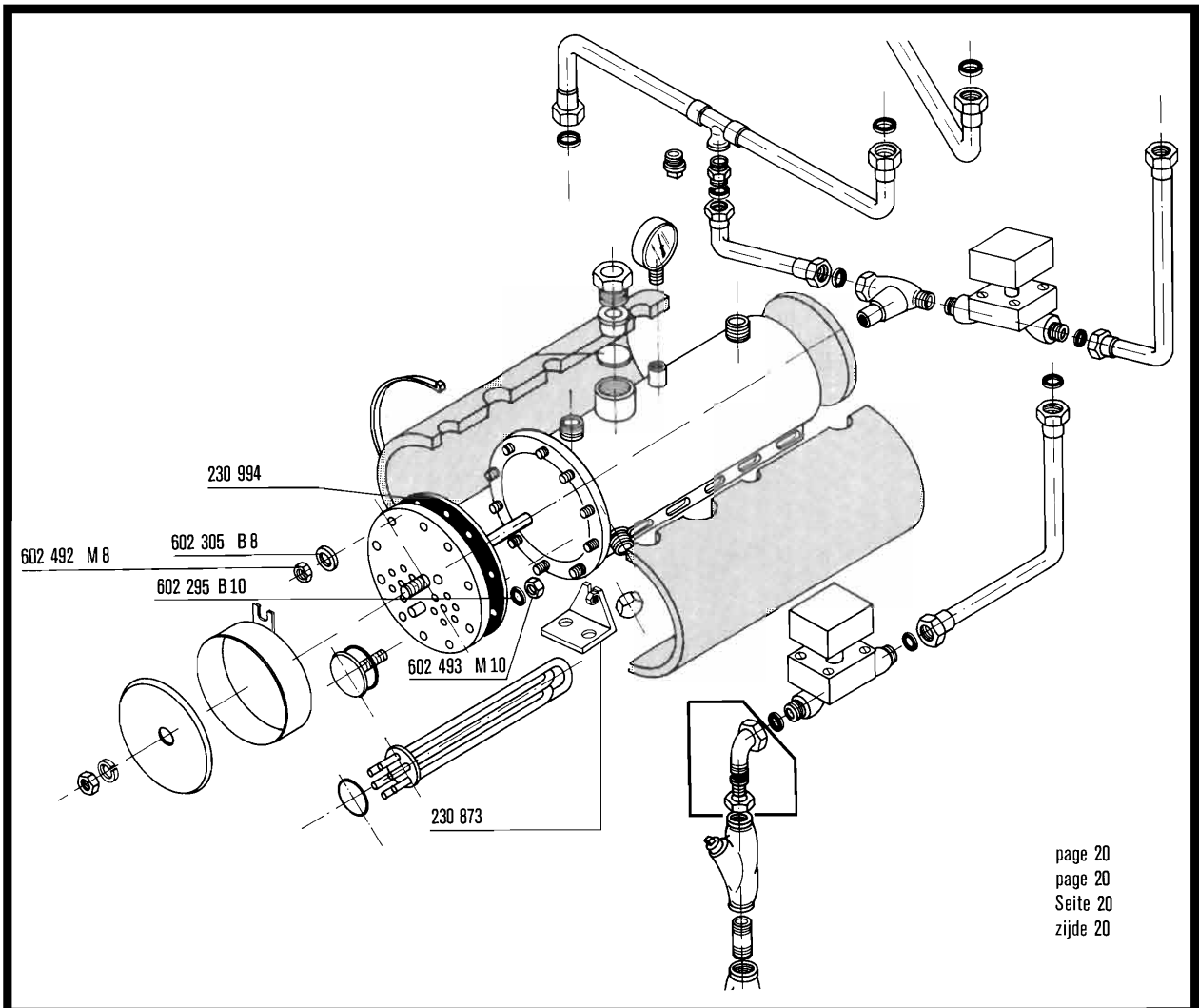
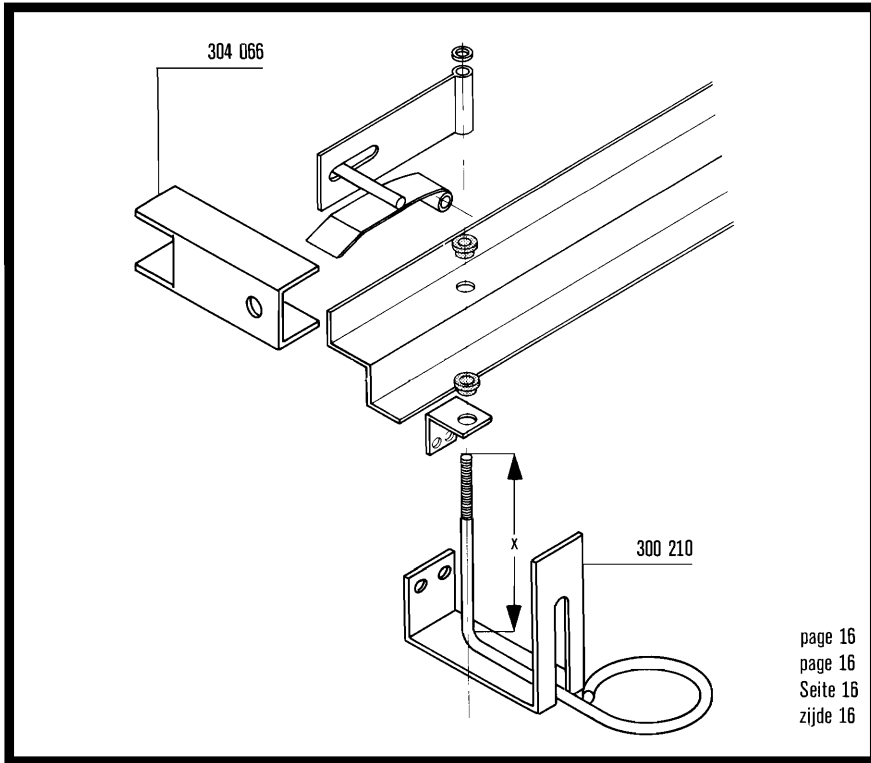
304367 - 2
229440 - 8 x 2

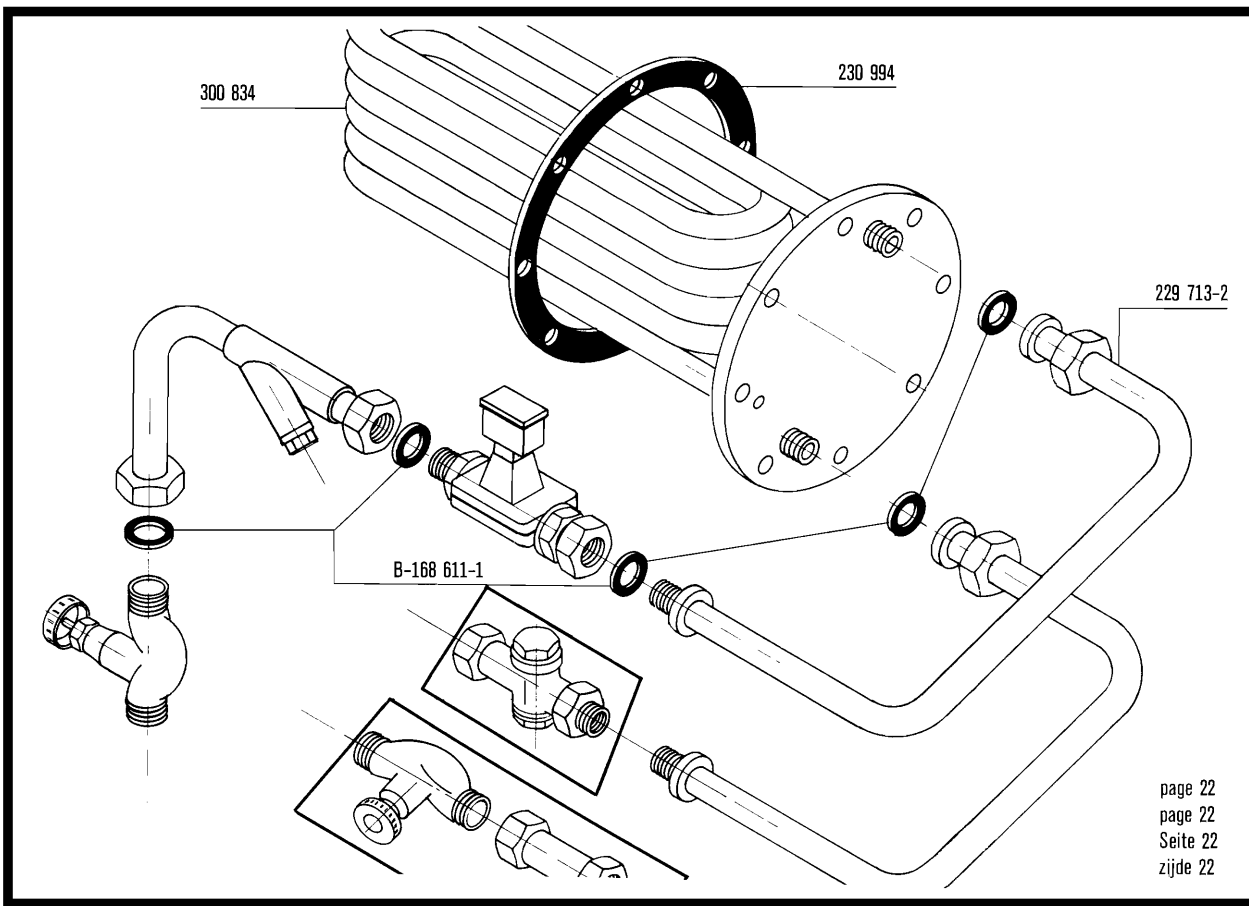


**correction
correction
Korrektur
correctie**

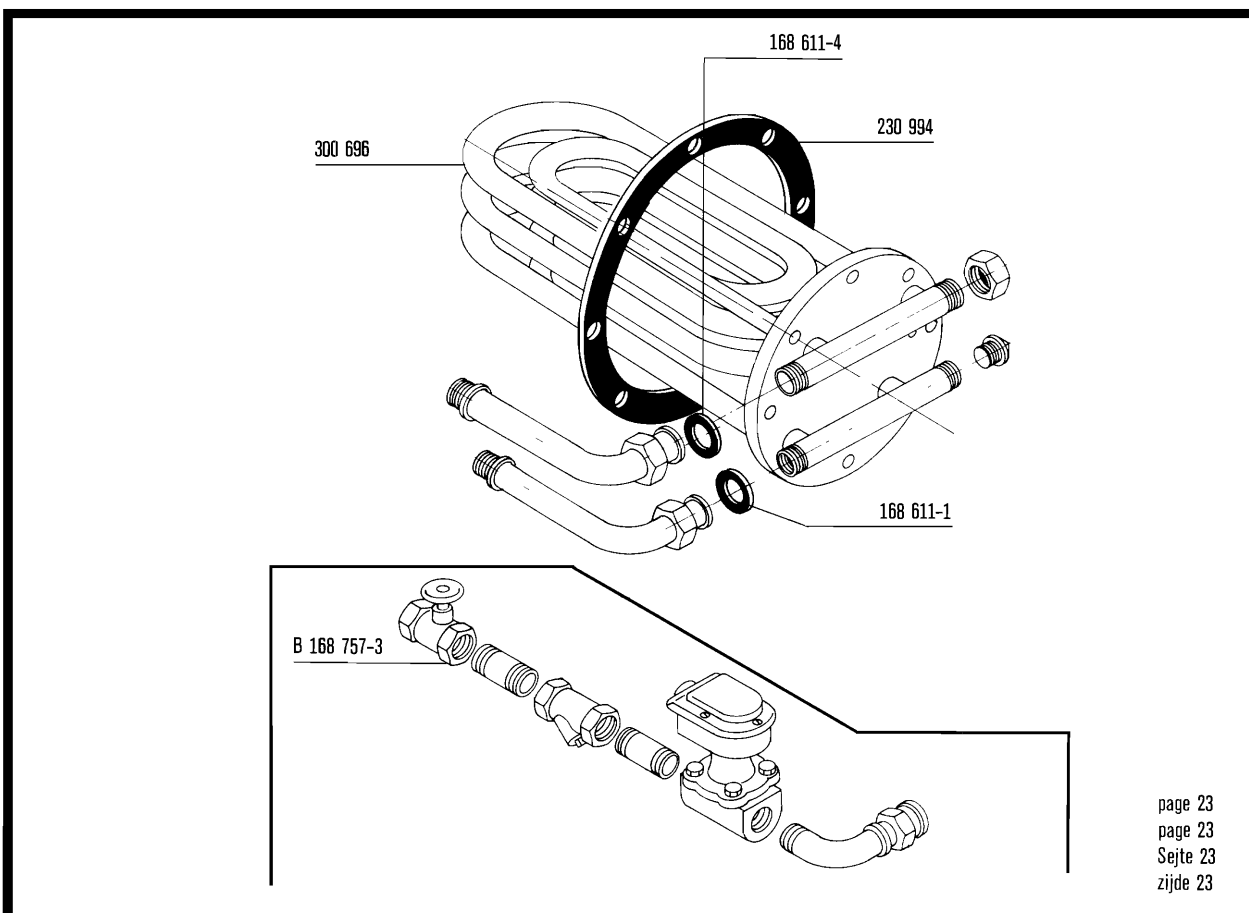


page 9
page 9
Seite 9
zijde 9





page 22
page 22
Seite 22
zijde 22



page 23
page 23
Seite 23
zijde 23

